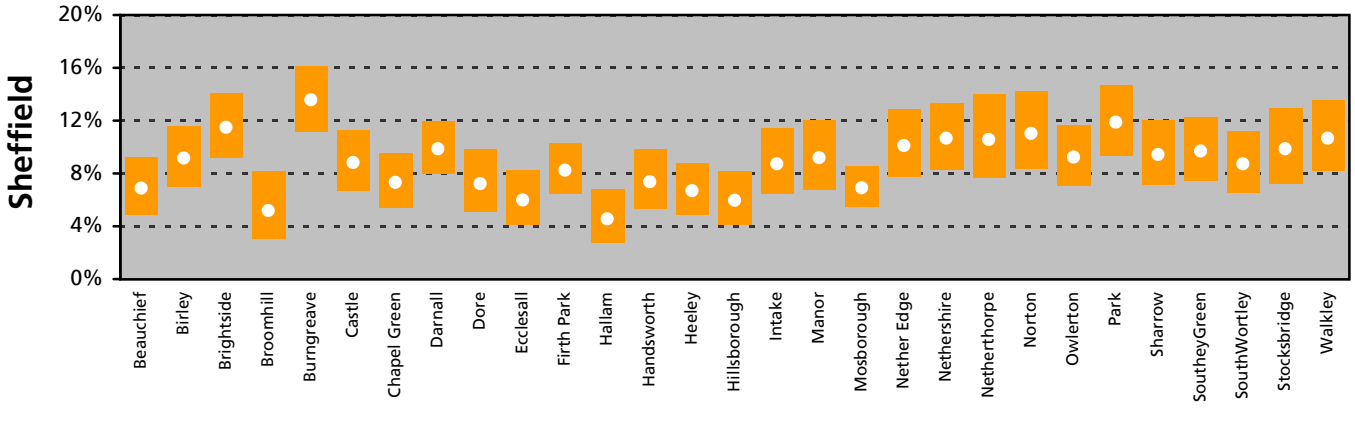
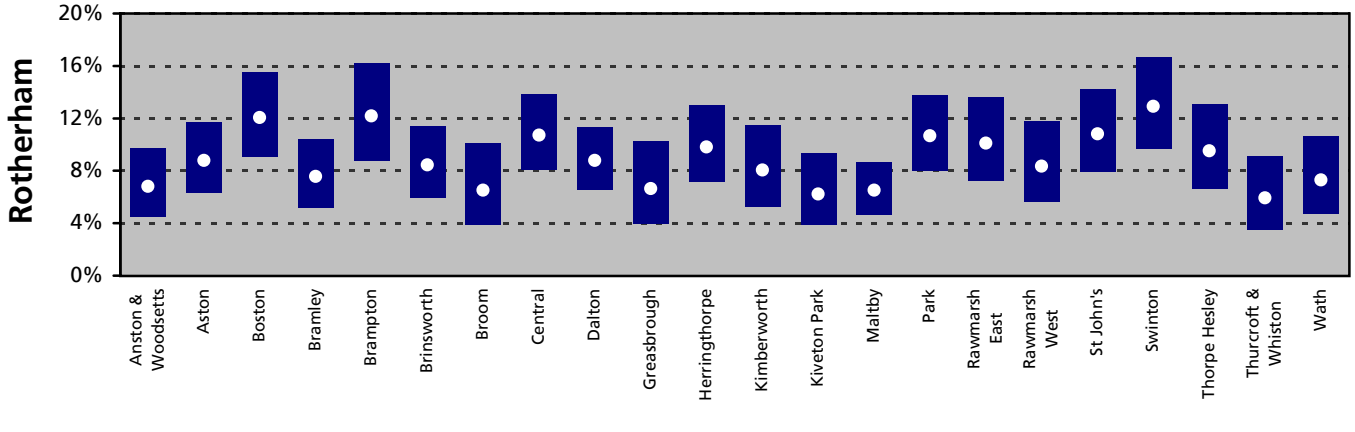
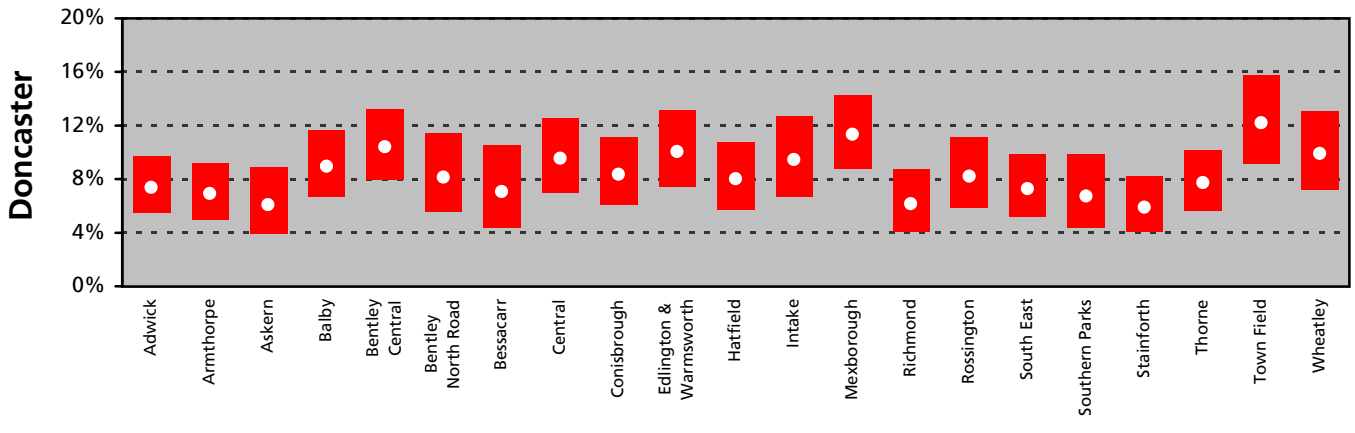
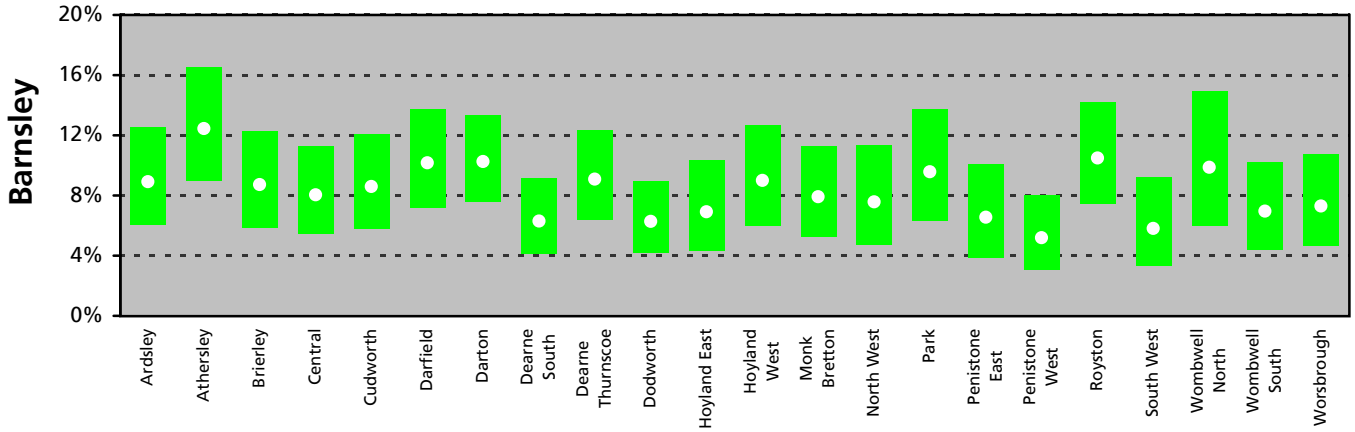


Low Birth Weight

Births with weight under 2,500g as a percentage of all births, with 95% confidence intervals

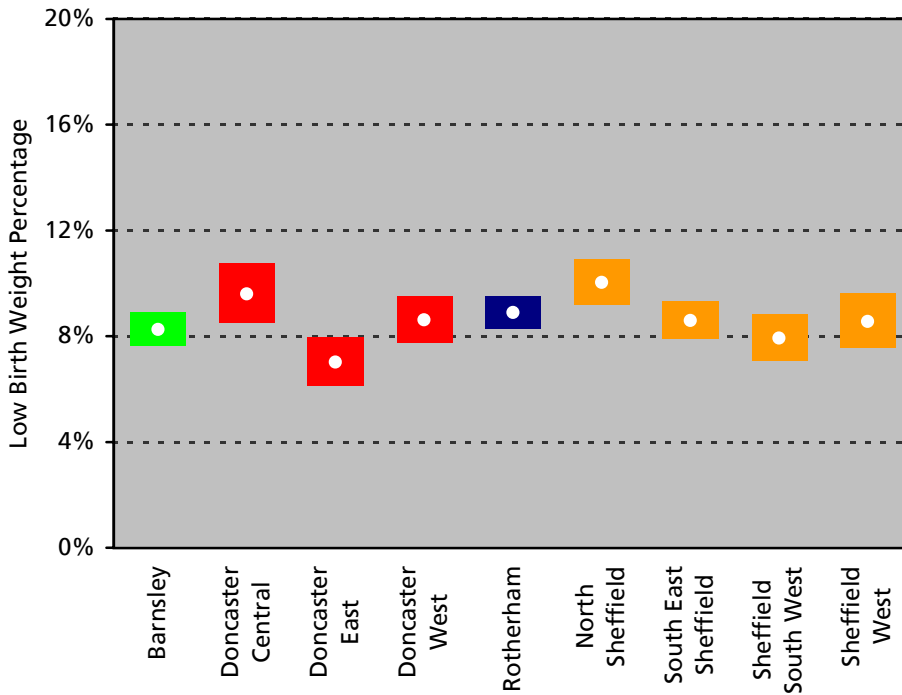
South Yorkshire Wards



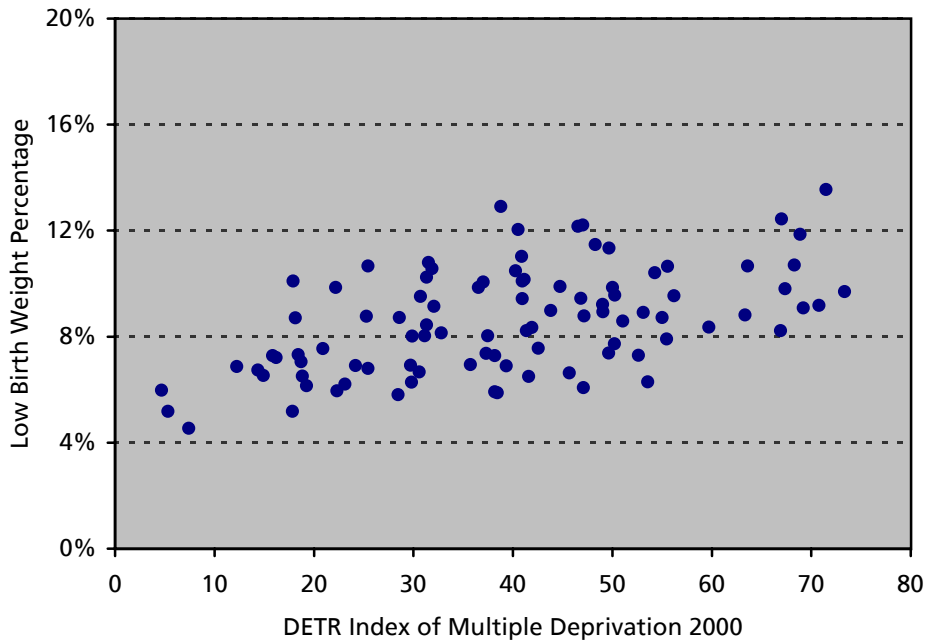
Low Birth Weight

Births with weight under 2,500g as a percentage of all births, with 95% confidence intervals

South Yorkshire Primary Care Trusts



Scatter plot of South Yorkshire Wards



Low Birth Weight

Birthweight under 2,500g

1998–2000

Source: ONS Annual Extracts of Births