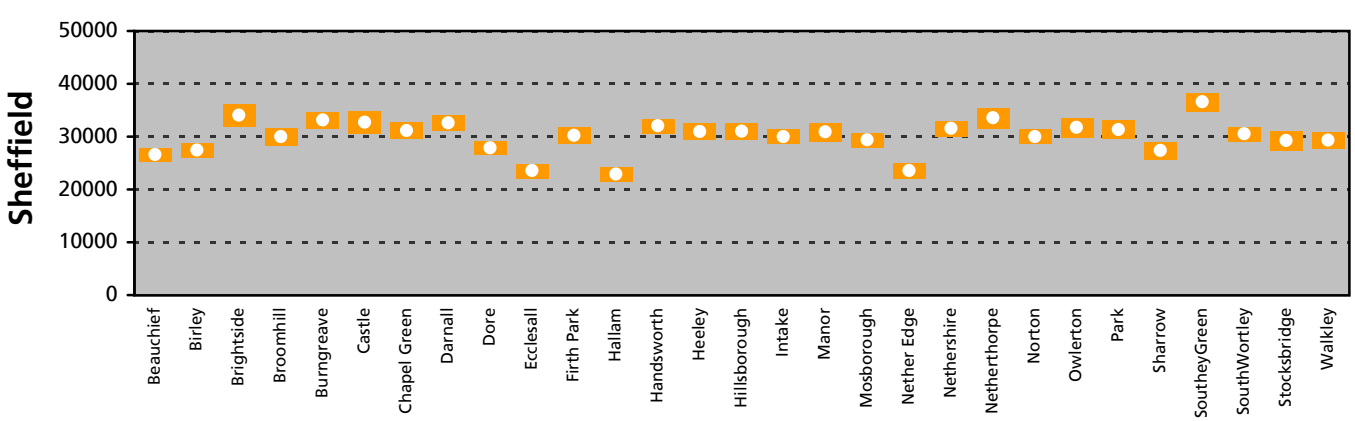
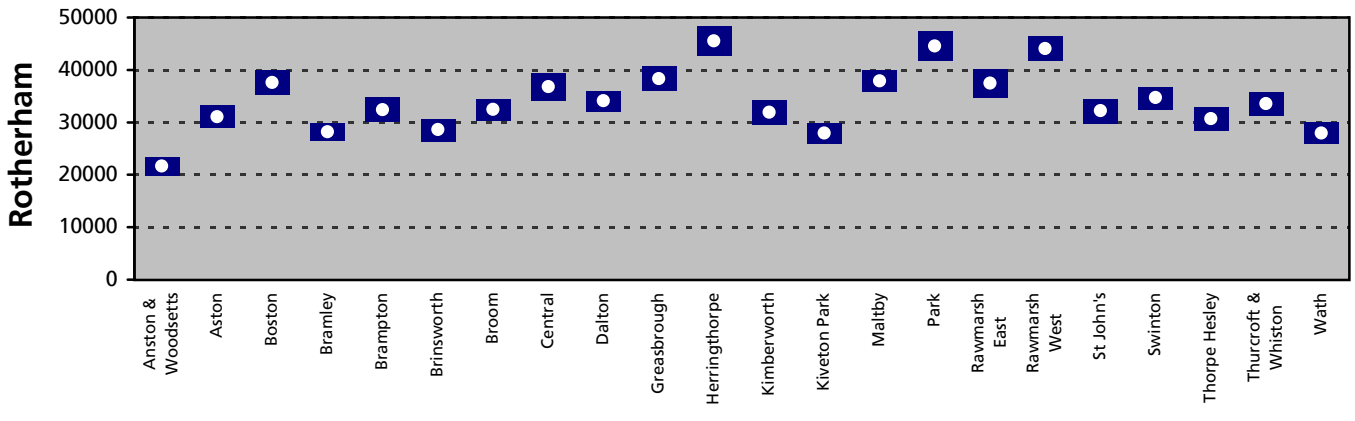
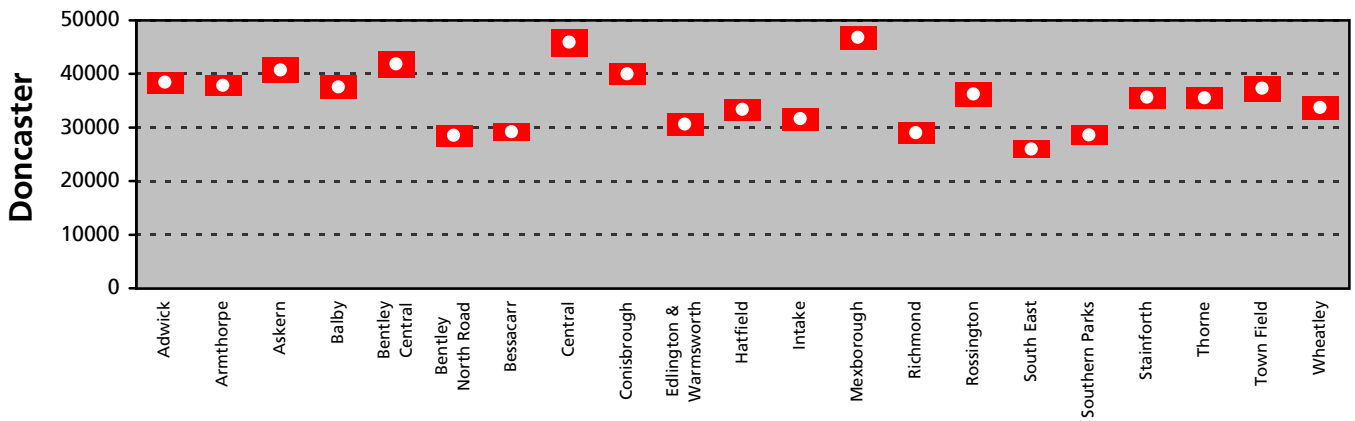
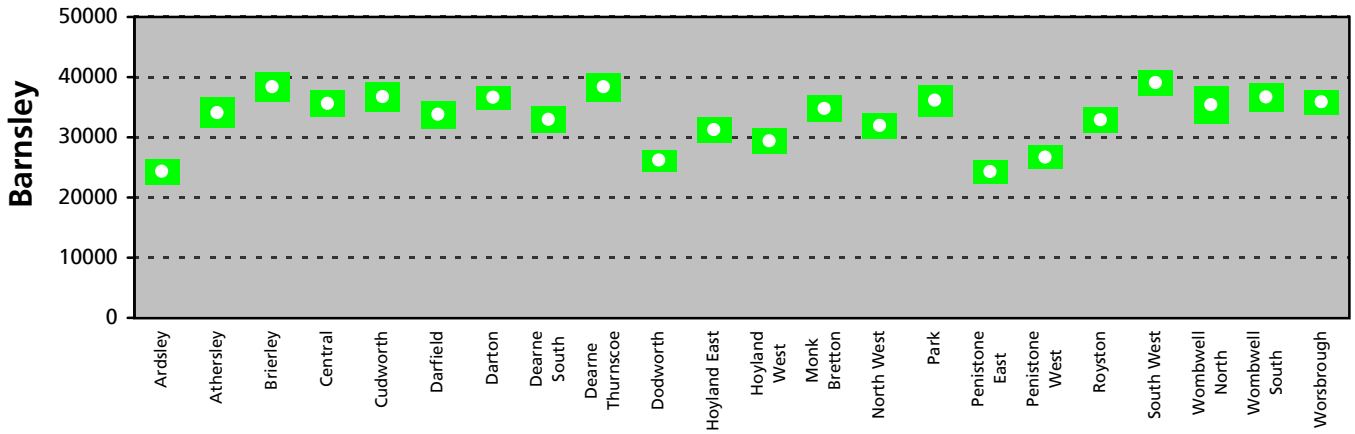


Emergency Admissions of Elderly People

Directly standardised rates per 100,000 persons aged 75 and over, with 95% confidence intervals

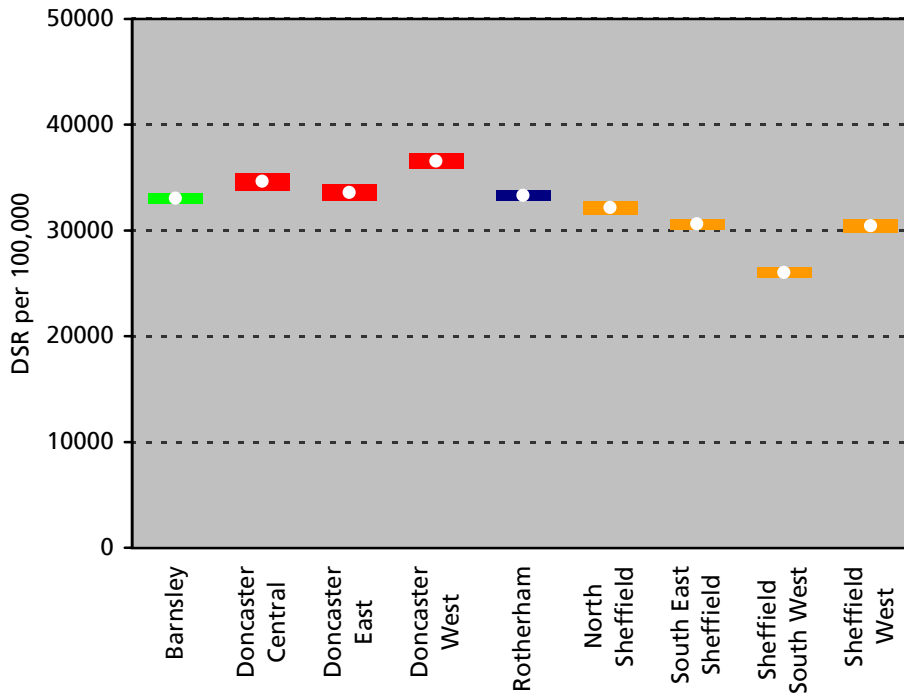
South Yorkshire Wards



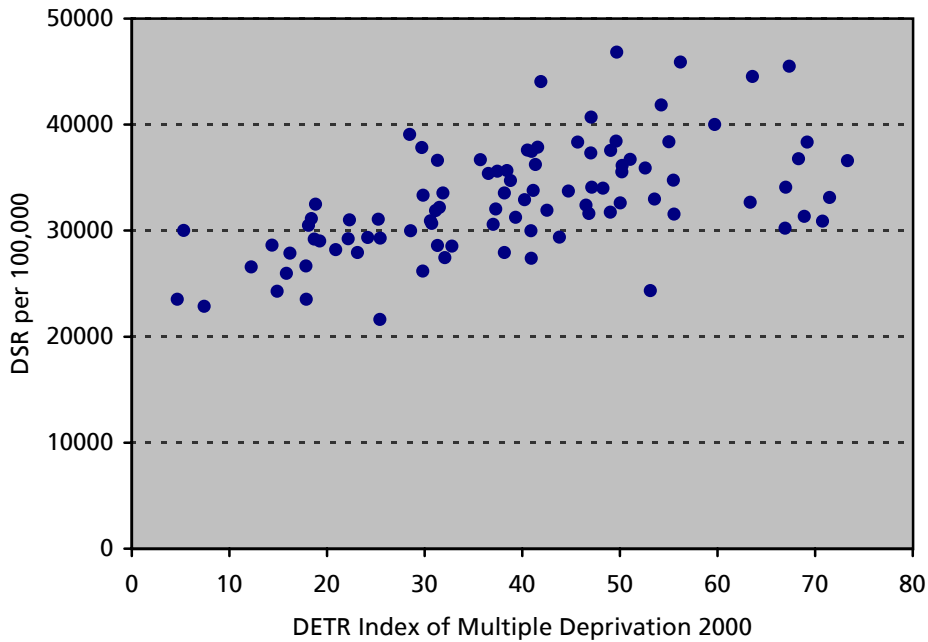
Emergency Admissions of Elderly People

Directly standardised rates per 100,000 persons aged 75 and over, with 95% confidence intervals

South Yorkshire Primary Care Trusts



Scatter plot of South Yorkshire Wards



Emergency Admissions of Elderly People

Emergency admissions
1998/9–2000/1 All persons aged 75 and over
Sources: Contract Minimum Data Sets,
ONS Mid-year Estimates of Population,
Exeter Patient Database