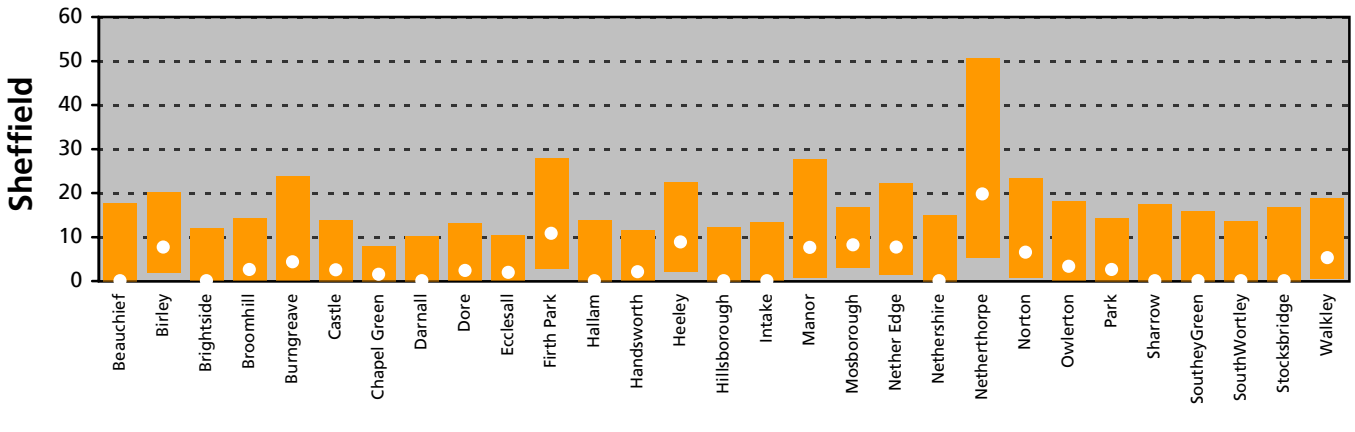
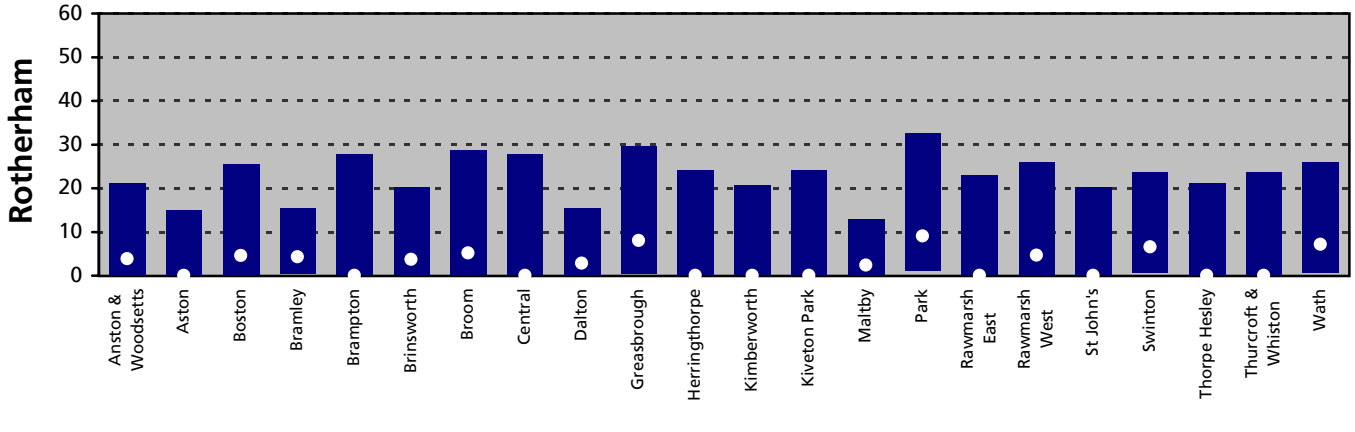
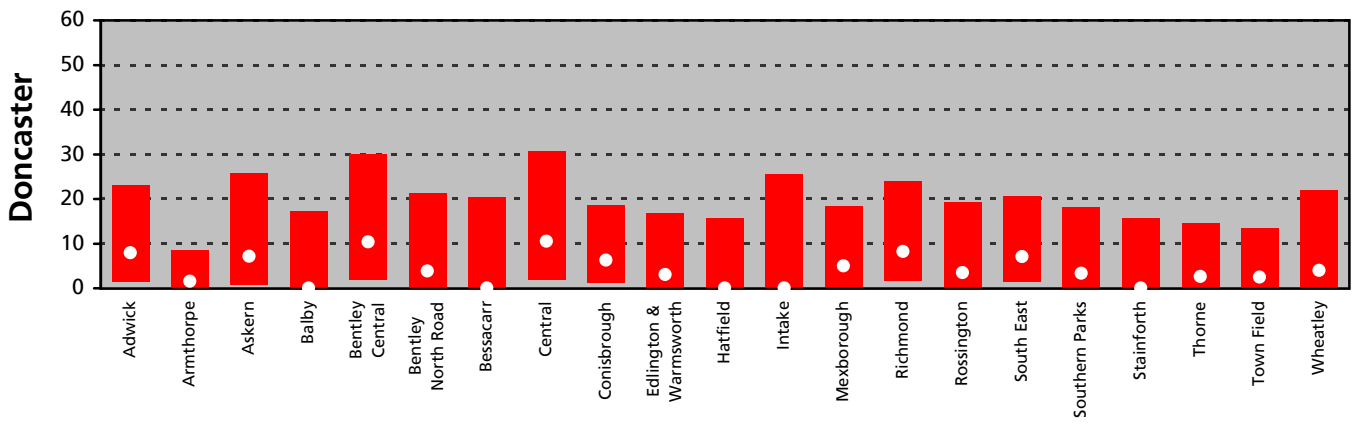
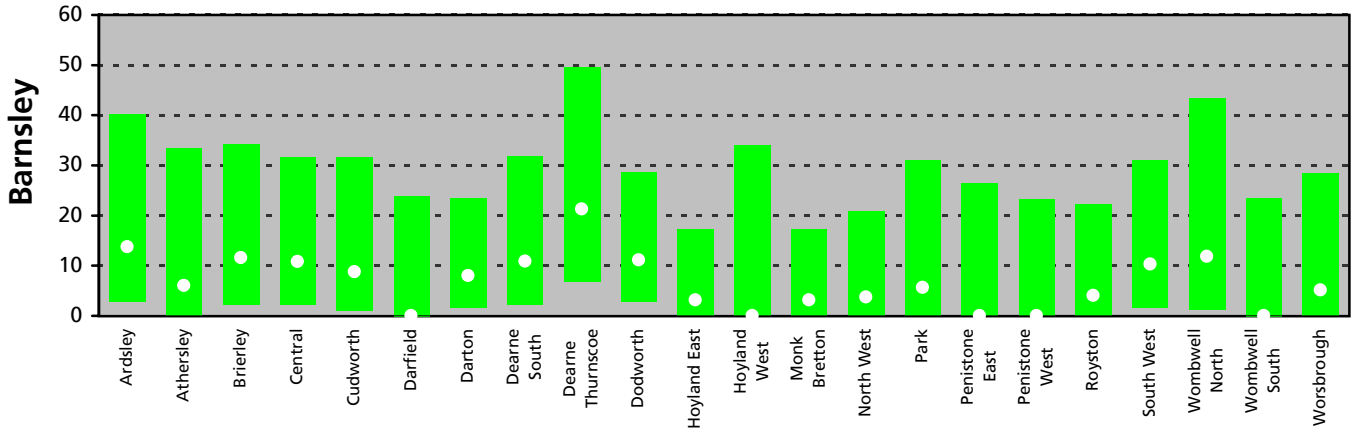


# Deaths from Cervical Cancer

Directly standardised rates per 100,000 women aged under 75, with 95% confidence intervals

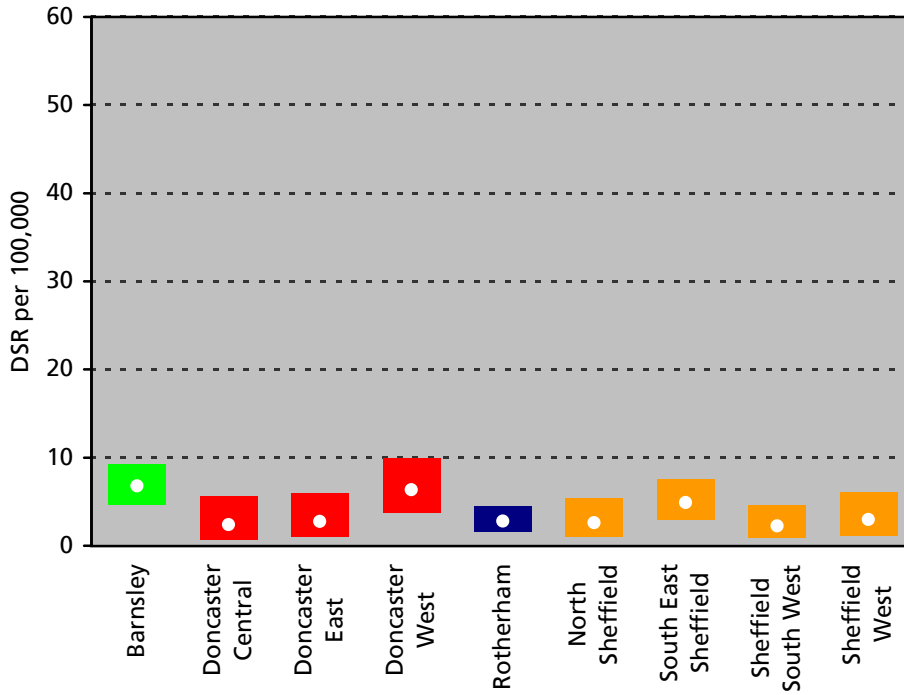
## South Yorkshire Wards



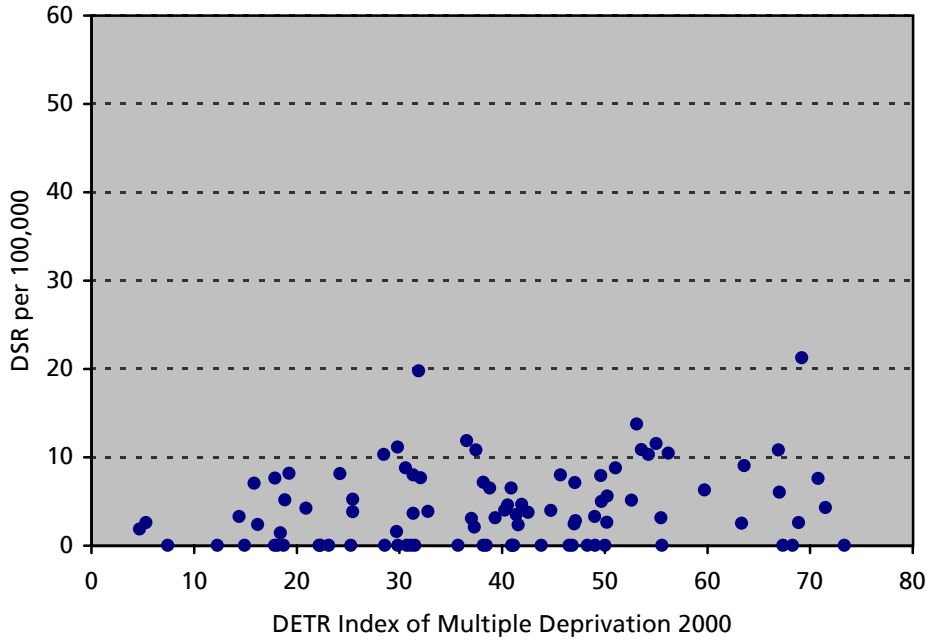
# Deaths from Cervical Cancer

Directly standardised rates per 100,000 women aged under 75, with 95% confidence intervals

## South Yorkshire Primary Care Trusts



## Scatter plot of South Yorkshire Wards



### Deaths from Cervical Cancer

ICD-9 180, ICD-10 C53

1996–2000 Females aged under 75

Sources: ONS Annual Extracts of Deaths,

ONS Mid-year Estimates of Population,

Exeter Patient Database