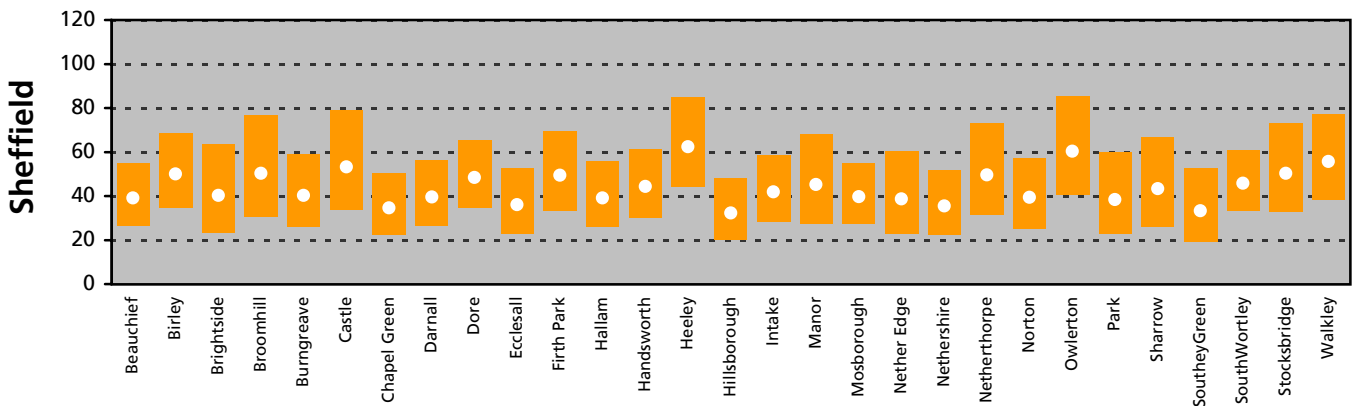
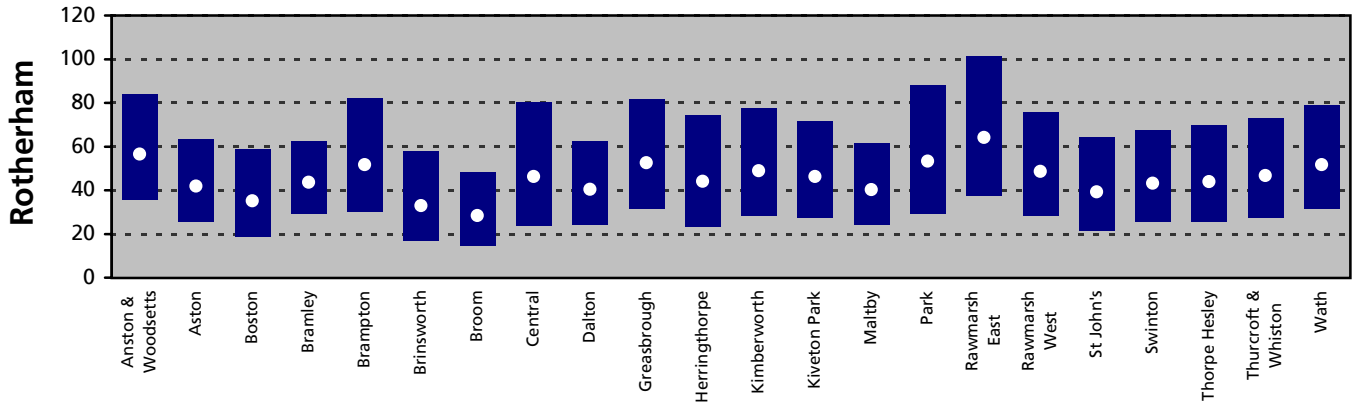
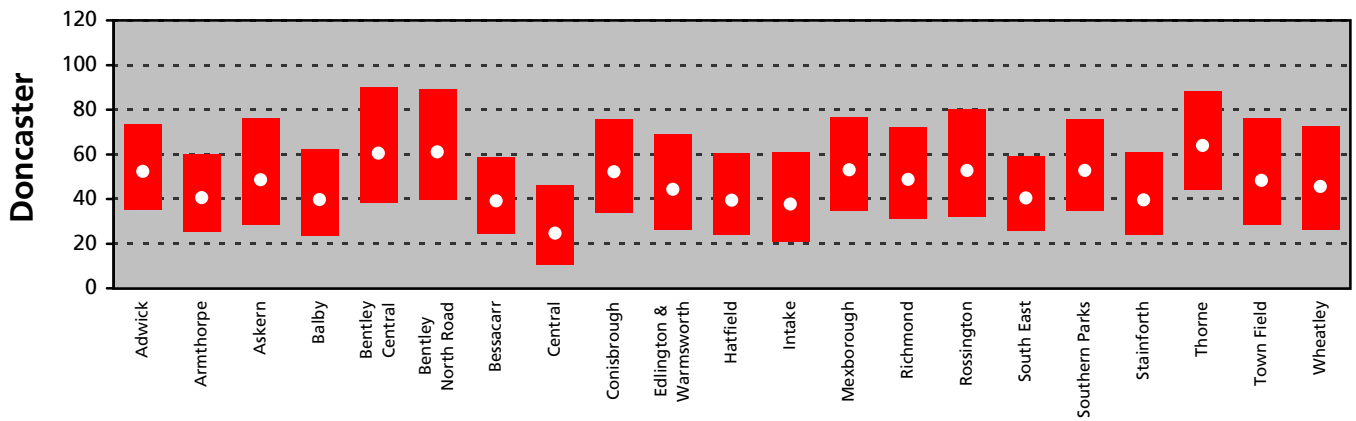
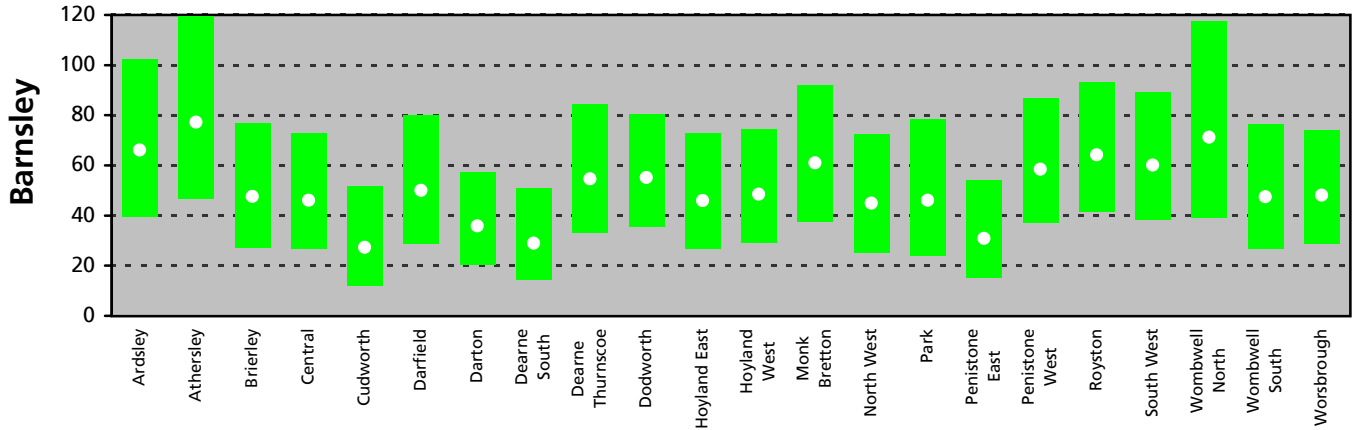


Colorectal Cancer Registrations

Directly standardised rates per 100,000 persons, with 95% confidence intervals

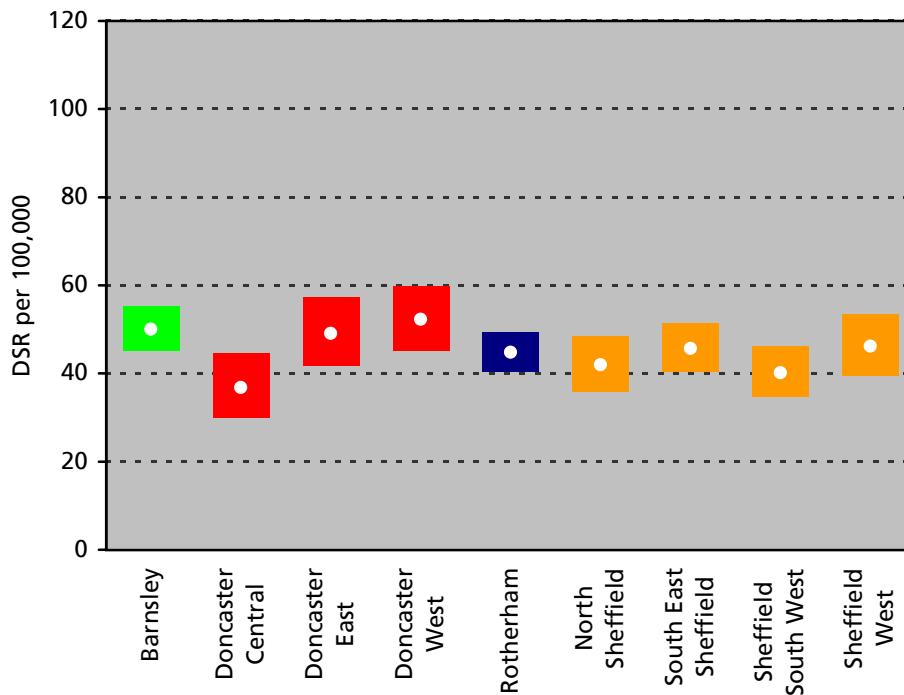
South Yorkshire Wards



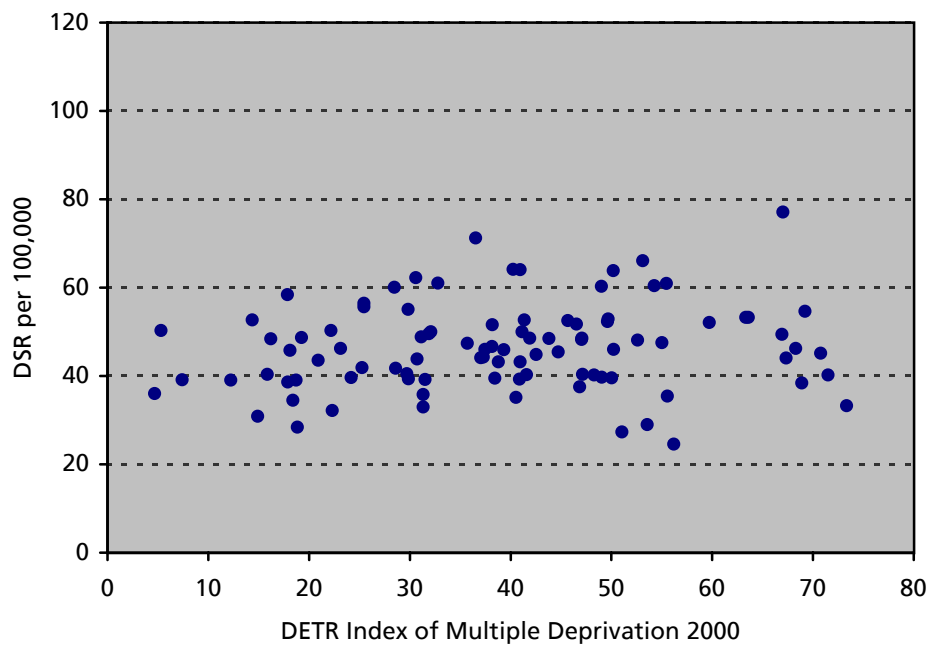
Colorectal Cancer Registrations

Directly standardised rates per 100,000 persons, with 95% confidence intervals

South Yorkshire Primary Care Trusts



Scatter plot of South Yorkshire Wards



Colorectal Cancer Registrations

ICD-10 C18–C21

1997–1999 All persons

Sources: Trent Cancer Registry,

ONS Mid-year Estimates of Population,

Exeter Patient Database