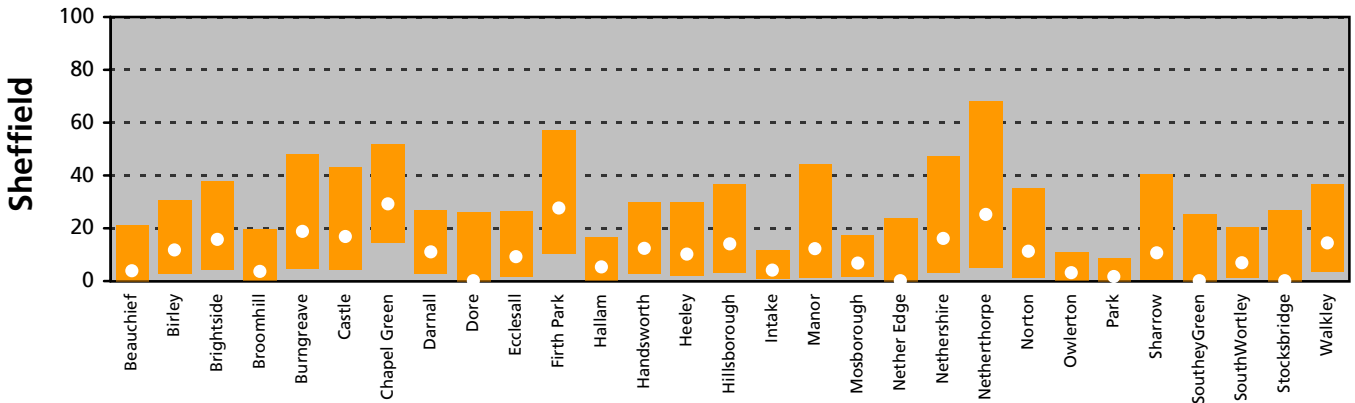
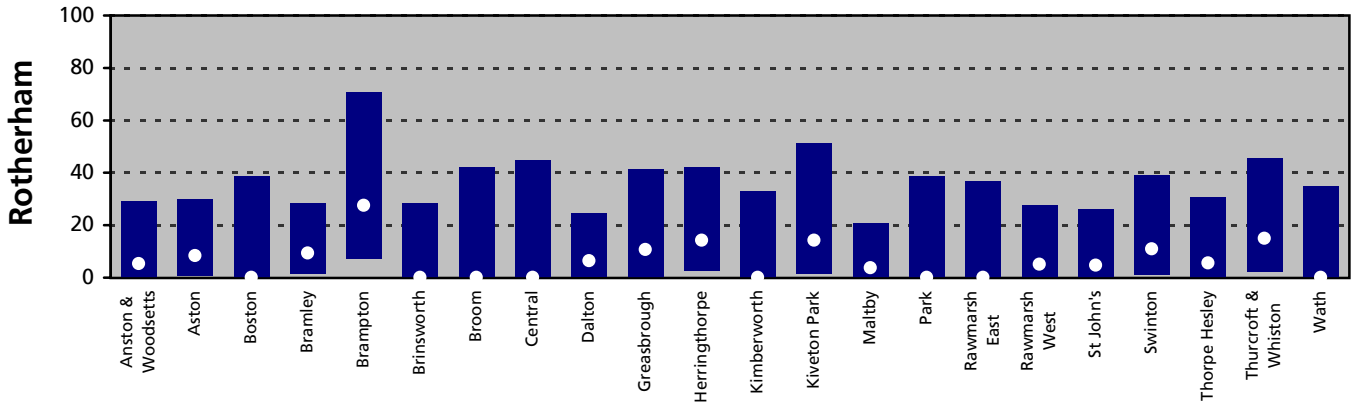
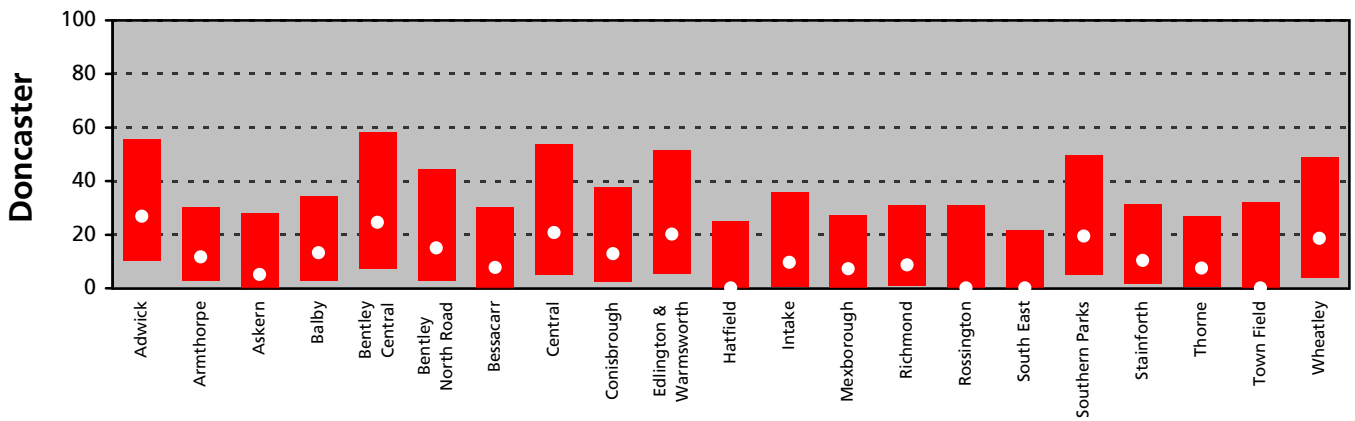
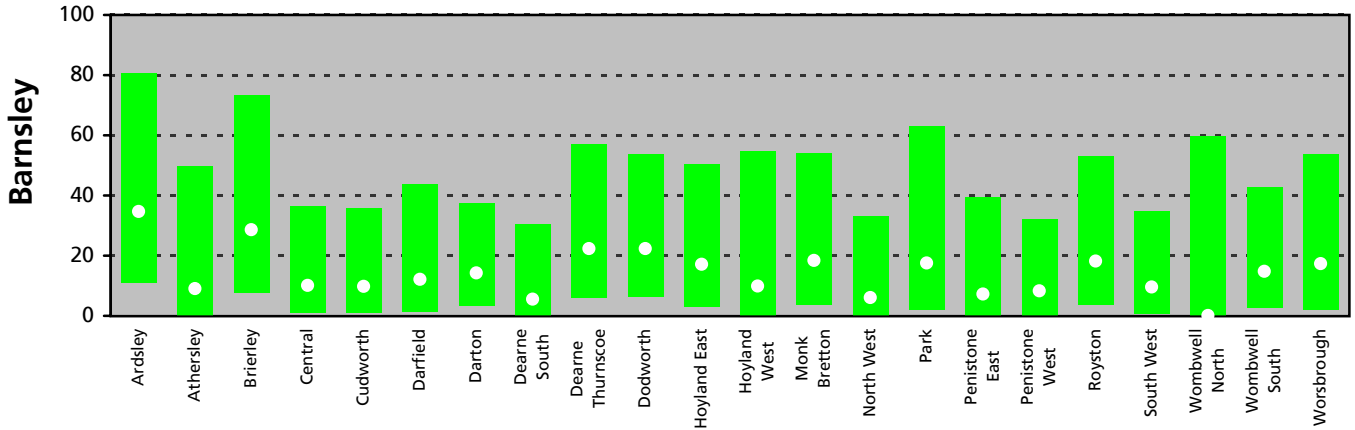


Cervical Cancer Registrations

Directly standardised rates per 100,000 women, with 95% confidence intervals

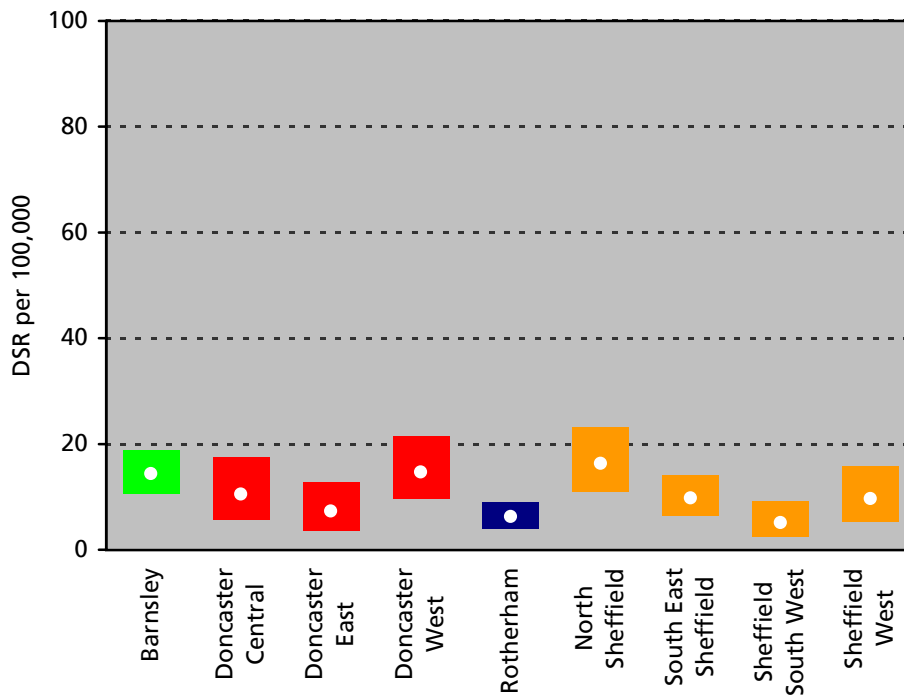
South Yorkshire Wards



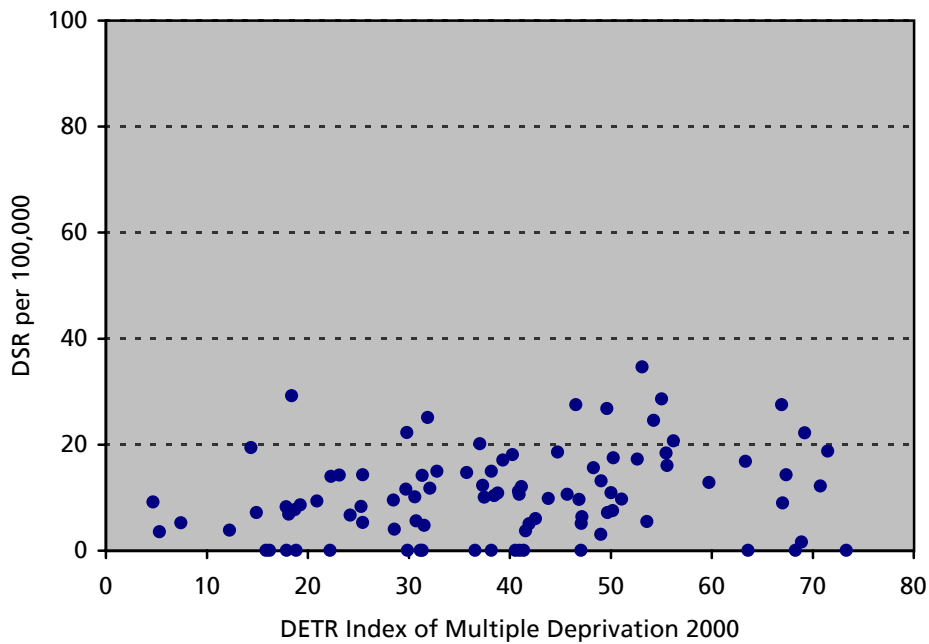
Cervical Cancer Registrations

Directly standardised rates per 100,000 women, with 95% confidence intervals

South Yorkshire Primary Care Trusts



Scatter plot of South Yorkshire Wards



Cervical Cancer Registrations

ICD-10 C53

1997–1999 All females

Sources: Trent Cancer Registry,

ONS Mid-year Estimates of Population,

Exeter Patient Database