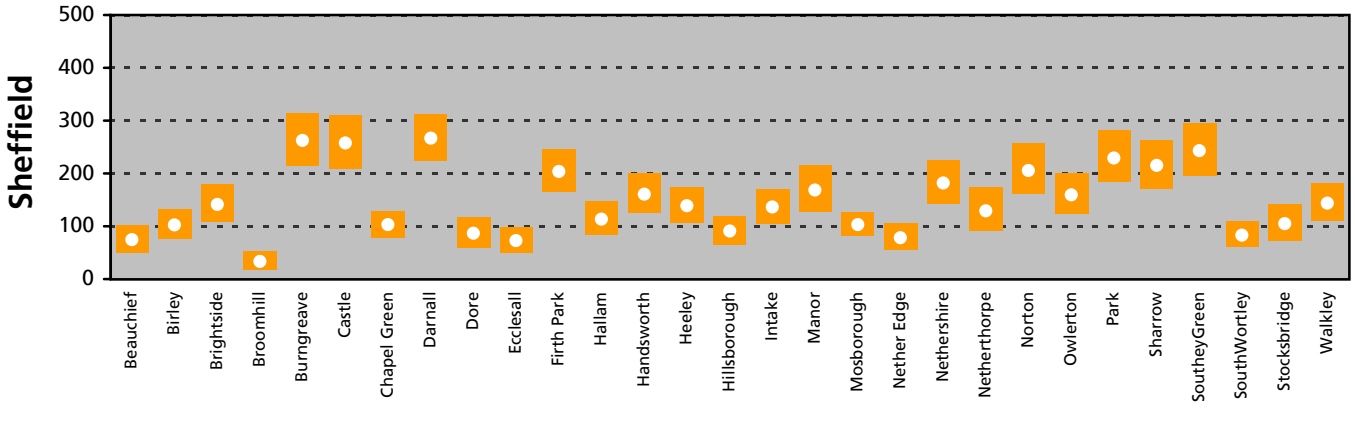
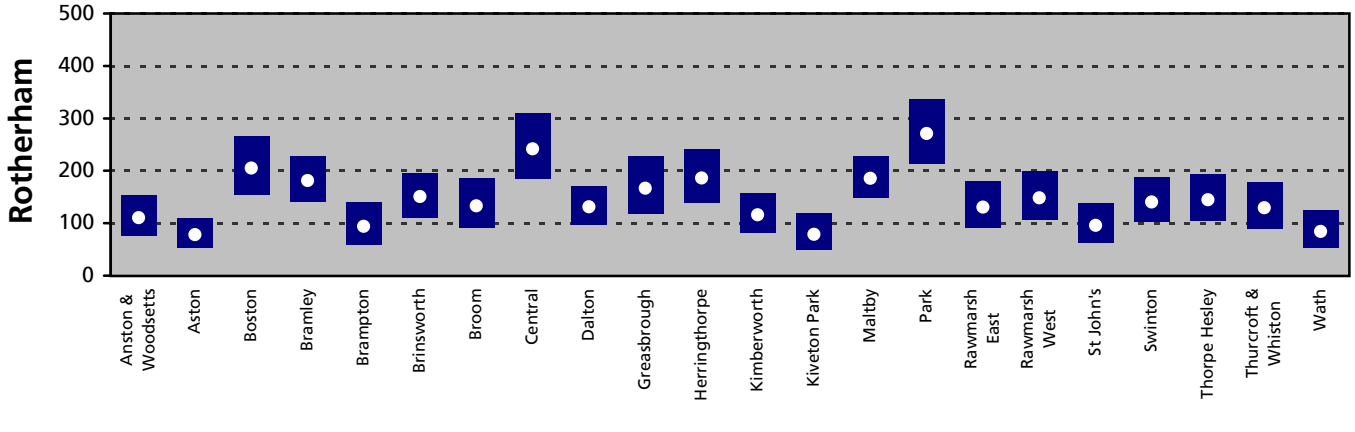
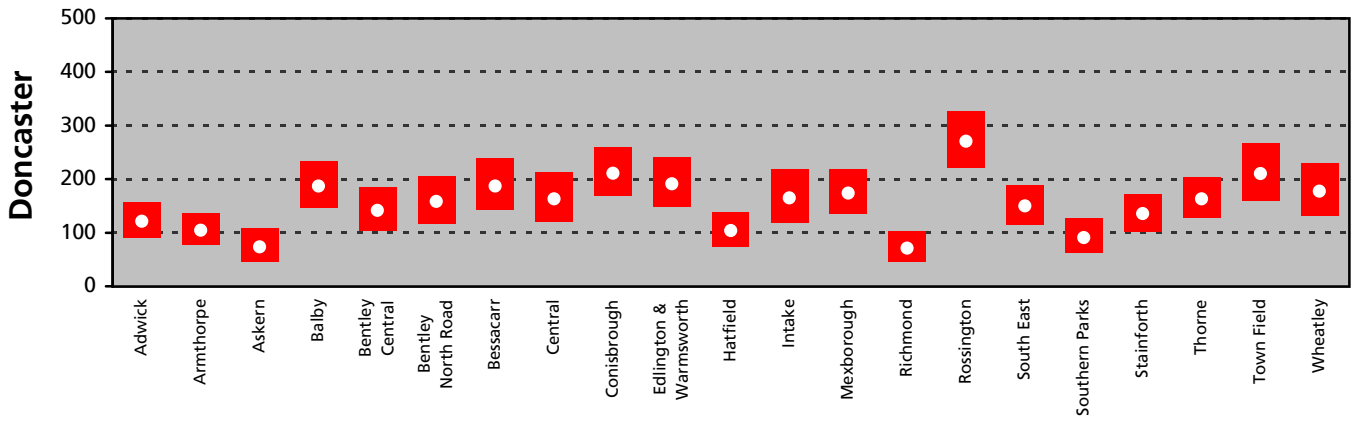
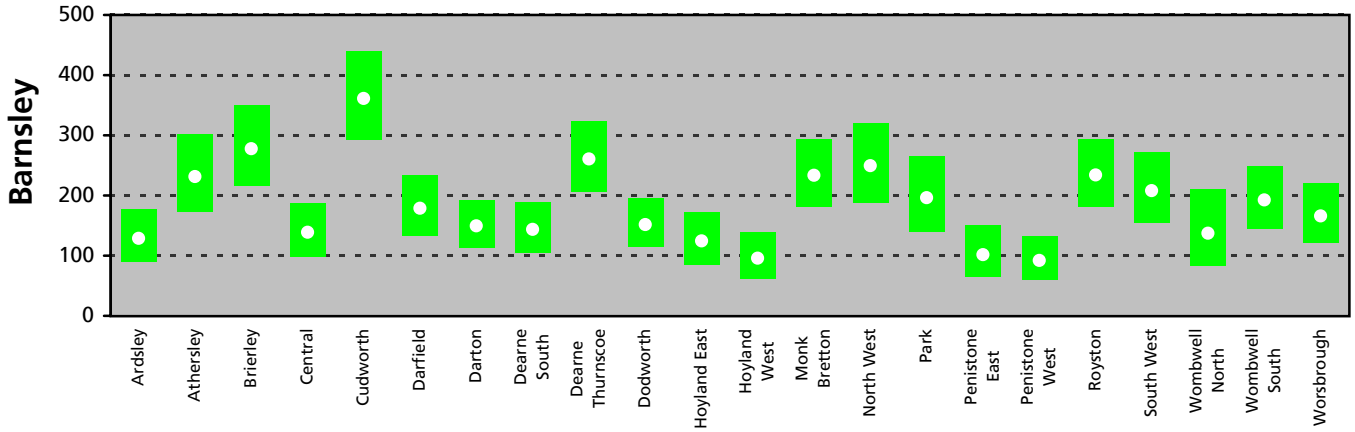


# Admissions for Asthma

Directly standardised rates per 100,000 persons, with 95% confidence intervals

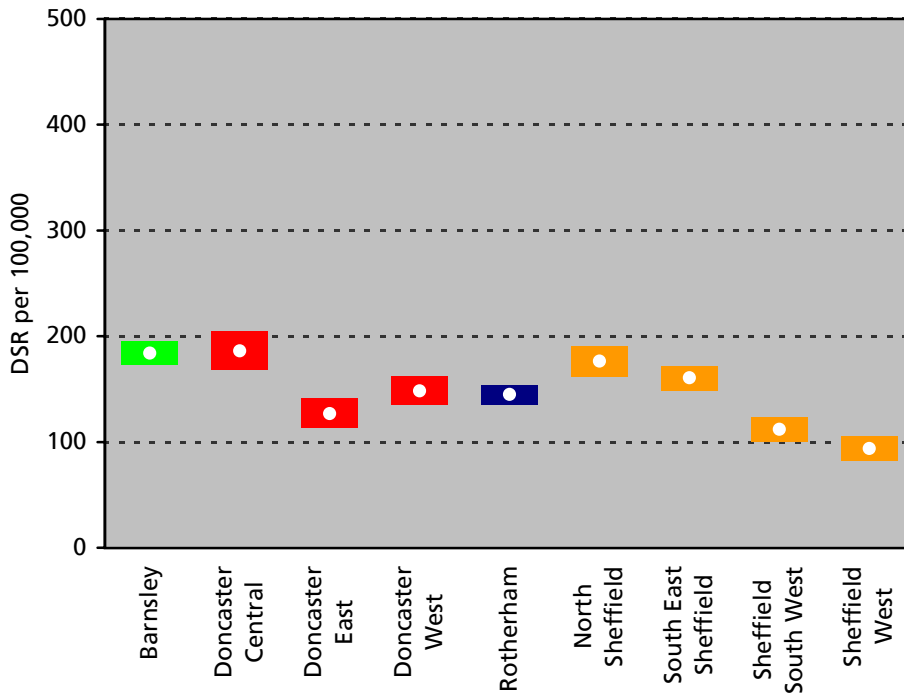
## South Yorkshire Wards



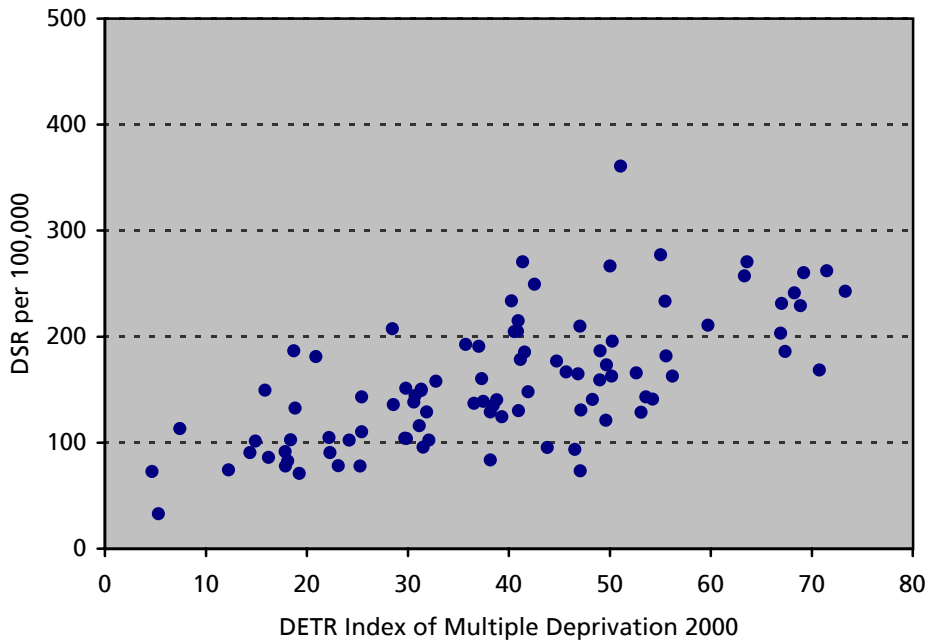
# Admissions for Asthma

Directly standardised rates per 100,000 persons, with 95% confidence intervals

## South Yorkshire Primary Care Trusts



## Scatter plot of South Yorkshire Wards



### Admissions for Asthma

Primary diagnosis ICD-10 J45–J46

1998/9–2000/1 All persons

Sources: Contract Minimum Data Sets,

ONS Mid-year Estimates of Population,

Exeter Patient Database