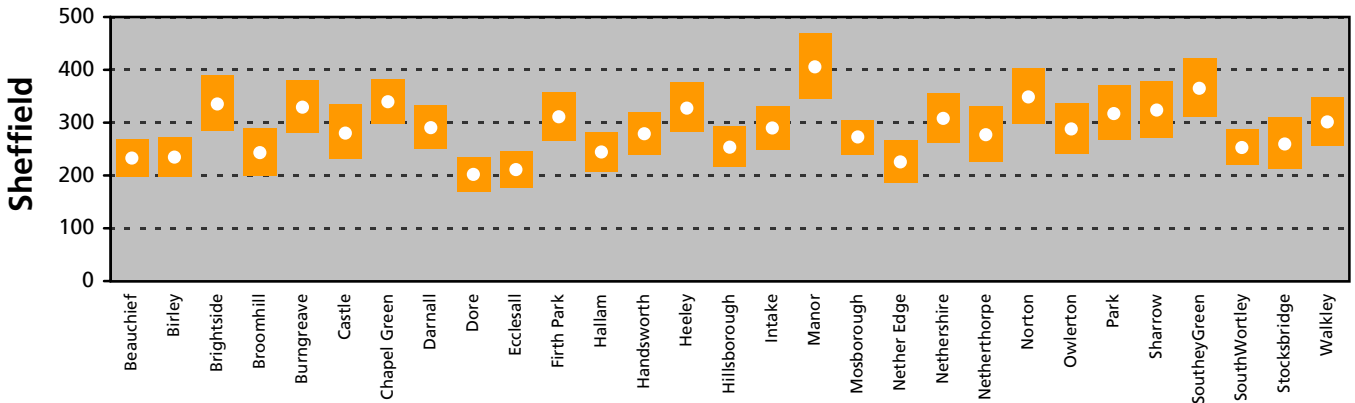
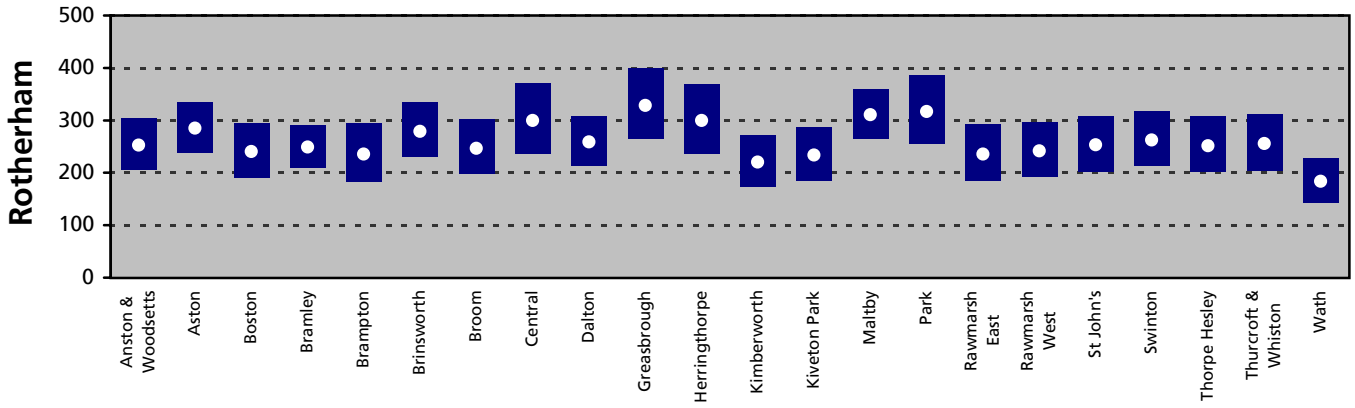
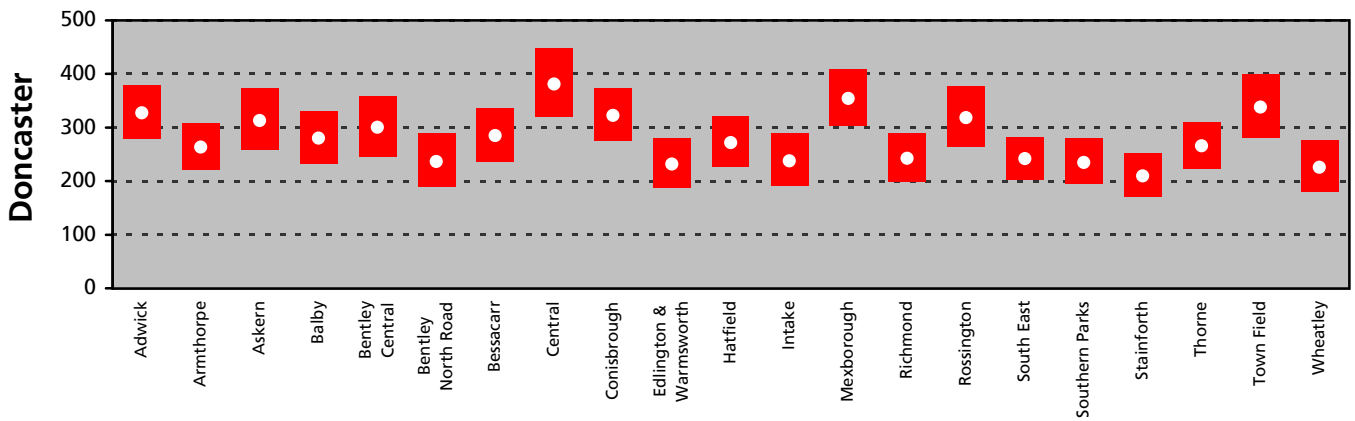
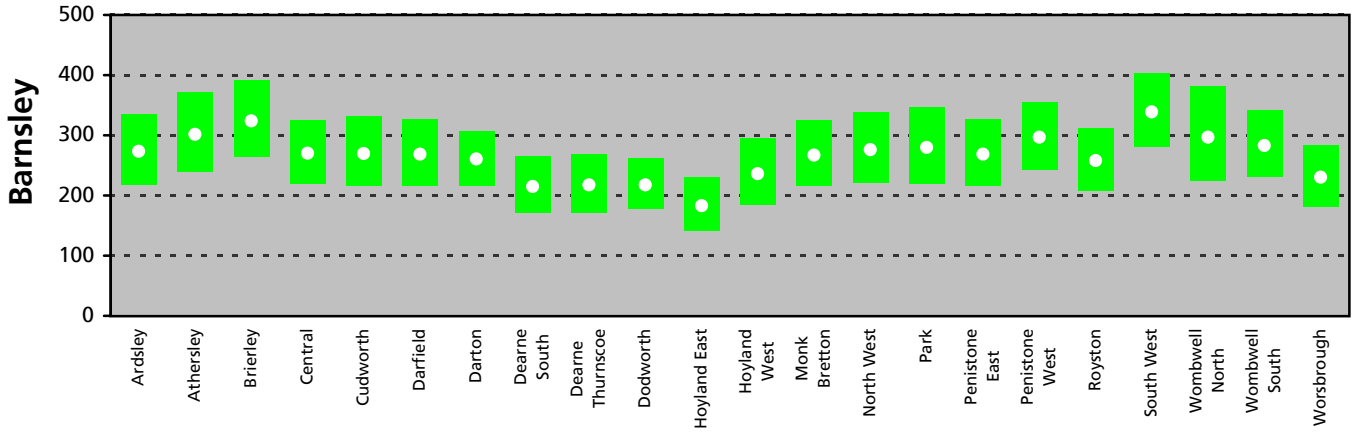


Admissions for Serious Accidents

Directly standardised rates per 100,000 persons, with 95% confidence intervals

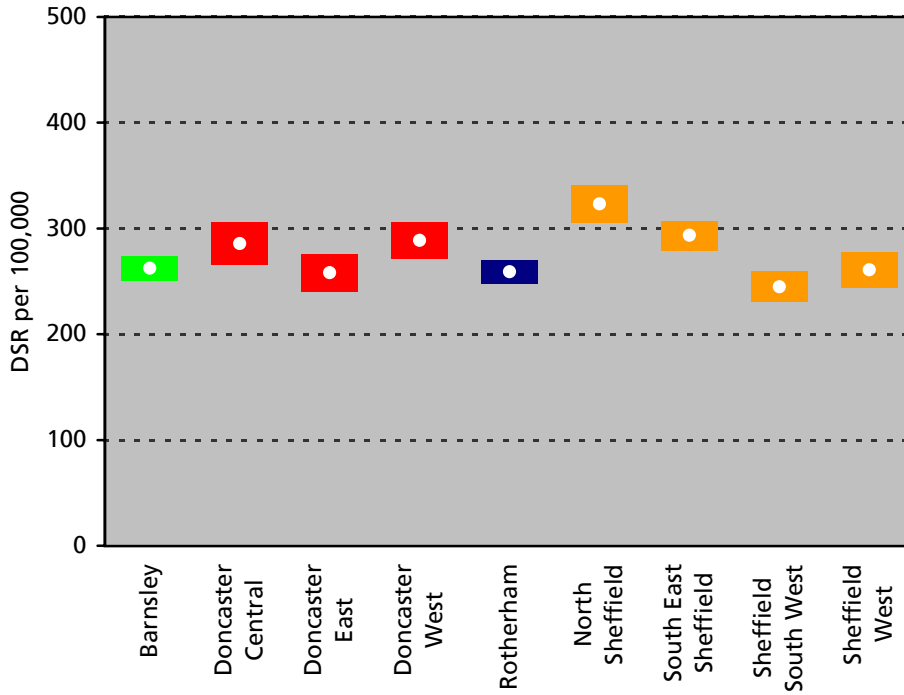
South Yorkshire Wards



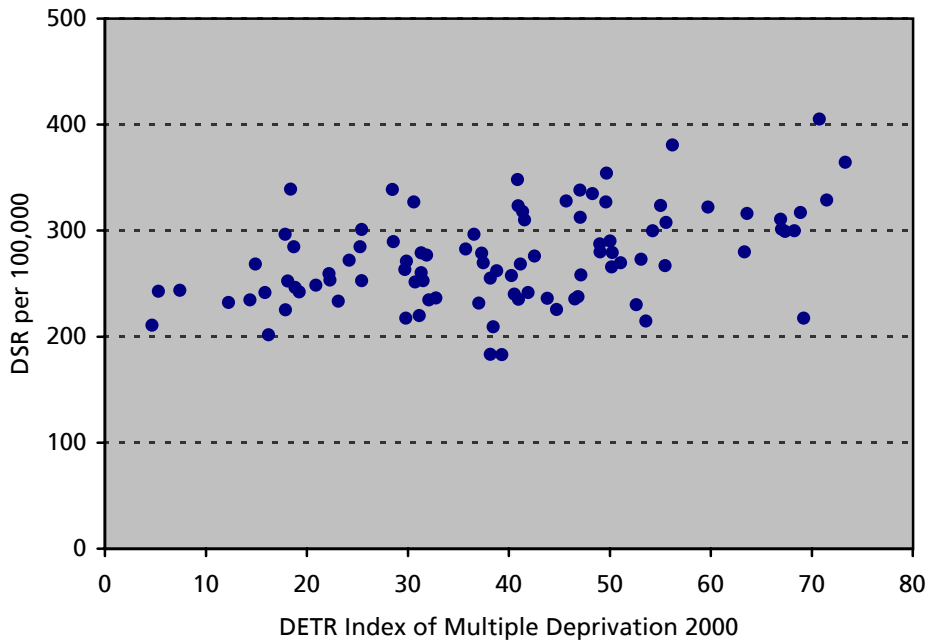
Admissions for Serious Accidents

Directly standardised rates per 100,000 persons, with 95% confidence intervals

South Yorkshire Primary Care Trusts



Scatter plot of South Yorkshire Wards



Admissions for Serious Accidents

Primary diagnosis ICD-10 S00–T98,
 secondary diagnosis ICD-10 V00–X59, Y40–Y84,
 stay exceeding 3 days

1998/9–2000/1 All persons

Sources: Contract Minimum Data Sets,
 ONS Mid-year Estimates of Population,
 Exeter Patient Database