

Thorpe in Balne Contacts and General Information

Doncaster West PCT

West Lodge, St Catherine's Hospital, Tickhill Road, Balby, Doncaster, DN4 8QN
Tel: 01302 796796 Fax: 01302 796081

www.doncasterwestpct.nhs.uk

Michael Potts – Chief Executive
michael.potts@doncasterwestpct.nhs.uk

Christine Hall – Director of Public Health
christine.hall@doncasterwestpct.nhs.uk

Government

Electoral Ward: Stainforth & Moorends
Parliamentary Constituency: Doncaster North
Member of Parliament: Ed Miliband

Community Development

Neighbourhood Management Area: North Rural
Community Forum: North

Schools

Thorpe in Balne falls within the catchment area of Campsmount College
The primary schools attended by most children in Thorpe in Balne are:
Askern Littlemoor Infant, Barnby Dun Primary and Our Lady of Mount Carmel RC Primary Schools
(note: this information is approximate and varies from year to year)

Sure Start / New Deal for Communities Projects

Thorpe in Balne is included in the Spa Spiders Sure Start Project

Health Visitors

Thorpe in Balne is covered by the Kirk Sandall & Edenthorpe team

Nearest Young Peoples / Sexual Health Clinics

Free Choices, Askern Youth Club, Selby Road, Askern
Always, Stainforth Youth Club, Church Road, Stainforth

GP Practices

The practice listed below serves at least 10% of Thorpe in Balne's resident population:
Dr DJ Brown & Partners, The Surgery, Field Road, Stainforth

Public Health Intelligence Unit

The Doncaster Public Health Intelligence Unit provides analytical support to the public health directorates in Doncaster Central, Doncaster East, and Doncaster West Primary Care Trusts

Doncaster Public Health Intelligence Unit
Doncaster East PCT, White Rose House, Ten Pound Walk, Doncaster, DN4 5DJ
Tel: 01302 320111, Fax: 01302 768336

See the PHIU Website for the Interactive Community Database

www.doncasterhealth.co.uk/phiu/communities

Doncaster Community Profiles, 2004 Thorpe in Balne

This profile of the health of the population of Thorpe in Balne presents a range of indicators of health and the determinants of health. This is the first time that this information has been collected together for the 88 communities in Doncaster. It is hoped that these profiles, which are being published as part of the Doncaster Directors of Public Health 2004 Report, will be used to monitor local services.

Additional resources are available at: www.doncasterhealth.co.uk/phiu/communities

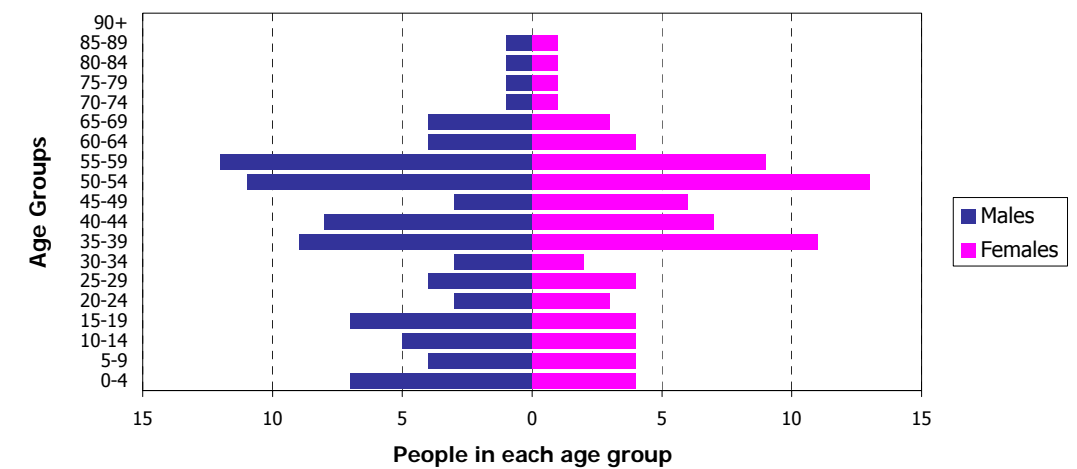


Population and Demography

	Thorpe in Balne	Doncaster
Total Population	169	286,862
Geographical Area	7.5km ²	567km ²
Population Density	23 people per km ²	506 people per km ²

	Thorpe in Balne		Doncaster	
Age Distribution				
Age-band 0-4	11 (6.2%)	5.9%		
Age-band 5-14	17 (10.1%)	13.6%		
Age-band 15-64	127 (74.8%)	64.1%		
Age-band 65-74	9 (5.3%)	9.1%		
Age-band 75+	6 (3.6%)	7.3%		
Ethnicity				
White	176 (100.0%)	97.7%		
Mixed	0 (0.0%)	0.6%		
Asian/Asian British	0 (0.0%)	1.1%		
Black/Black British	0 (0.0%)	0.4%		
Chinese/Other	0 (0.0%)	0.3%		

Thorpe in Balne Population Pyramid



Deaths and Life Expectancy

	Thorpe in Balne	Doncaster
Male Life Expectancy at birth	insufficient data for calculation	74.5
Female Life Expectancy at birth	insufficient data for calculation	79.2
Across all ages there were fewer than 5 deaths of Thorpe in Balne residents in 1998-2002.		
All Cause Mortality Rate	<5 deaths	406.5
All Cancers	<5 deaths	143.2
Colorectal Cancer	<5 deaths	13.9
Lung Cancer	<5 deaths	39.1
Breast Cancer (females)	<5 deaths	24.9
Circulatory Disease	<5 deaths	132.7
CHD	<5 deaths	87.4
Stroke	<5 deaths	22.8
Chronic Lung Disease	<5 deaths	22.9
Accidents (all ages)	<5 deaths	15.6

Death rates per 100,000 resident population per year, 1998–2002, directly standardised for age and sex with 95% confidence intervals (in brackets). Ages under 75 unless stated. 🟢 and 🟡 indicate, respectively, significantly lower and higher death rates than Doncaster average (p<0.05) and 🟠 not significantly different from the average. 🟢🟢 or 🟡🟡 indicate extremely high or low values (p<0.002). Where there are fewer than 5 deaths the number is not shown. Source: ONS Annual Death Extracts and 2001 Census populations.

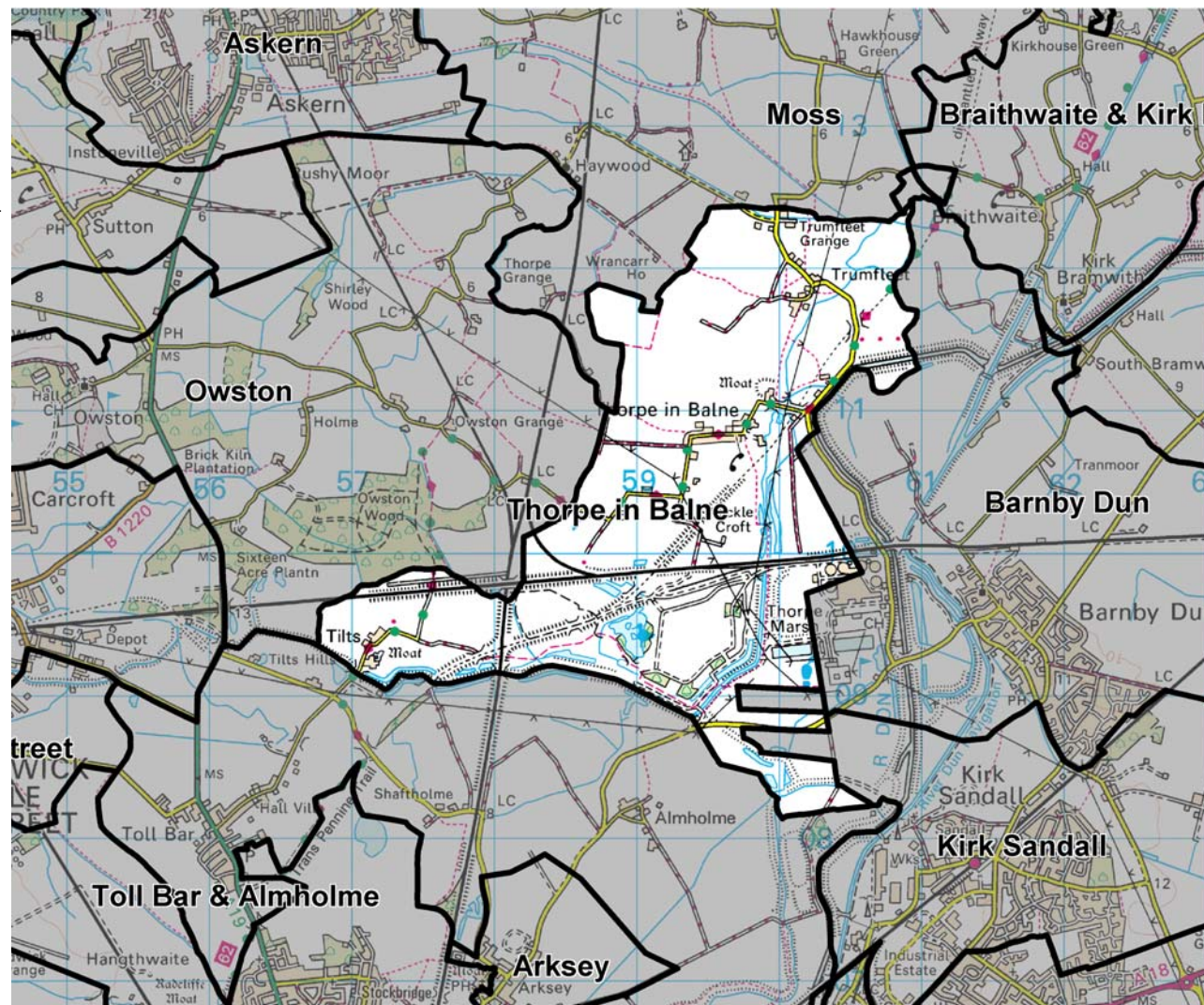
Cancer Incidence Rates

	Thorpe in Balne	Doncaster
All Cancers	See note below	386.6
Colorectal Cancer		47.7
Lung Cancer		65.1
Breast Cancer (females)		119.0
Prostate Cancer (males)		60.7
Skin Cancer		98.0

The Trent Cancer Registry's guidelines forbid data to be released for areas with a population of less than 1,000. Hence no data for Thorpe in Balne can be shown.

Cancer Screening

	Thorpe in Balne	Doncaster
Cervical Cytology (Feb 2004)	84.1% (69.9%, 93.4%) 🟡	82.4%
Breast Screening (Mar 2004)	Not available at community level West PCT: 81.4%	82.4%



Map of Thorpe in Balne Community Boundary

Scale 1:50,000 © Crown Copyright Ordnance Survey, 2004 (licence no 100025236)

Population Health Indicators

	Thorpe in Balne	Doncaster
People with limiting long-term illness	31 - 24% 🟡	
People with 'not good' general health	21 - 7% 🟡	

The percentages above/below average show comparisons with the Doncaster average. A positive score indicates that there are proportionately more people in Thorpe in Balne with limiting long-term illness/disability or 'not good' health than expected. The comparative percentages have been standardised to take account of the age of the local population.

General Deprivation Indicators

	Thorpe in Balne	Doncaster
Classification of Household Deprivation	24.3% deprived, ranked 77 of the 88 Doncaster Communities Quintile 5 (most affluent quintile)	

Source: Census 2001 Table UV067

2004 Indices of Deprivation	Doncaster rank	Quintile ranking
Overall Deprivation Score	37 of 88	Quintile 3
Barriers to Housing & Services Domain	7 of 88	Quintile 1
Crime Domain	36 of 88	Quintile 2
Education, Skills & Training Domain	52 of 88	Quintile 4
Employment Domain	39 of 88	Quintile 4
Health & Disability Domain	45 of 88	Quintile 4
Income Domain	55 of 88	Quintile 4
Living Environment Domain	39 of 88	Quintile 3

In all the above domains, rank 1 is the most deprived community in Doncaster and quintile 1 contains the most deprived 20% of the population of Doncaster. Source: DETR Indices of Deprivation 2004

Socio-economic Indicators

	Thorpe in Balne	Doncaster
Children in households with no earner	<4 cases	
Lone parents	17 - 11% 🟡	
Carers (providing unpaid care)	26 + 5% 🟡	
People with no qualifications	31 - 40% 🟢	
People working over 48 hours a week	24 + 67% 🟡	
People not employed	27 - 27% 🟡	
People in low social grades	22 - 51% 🟢	
Households with no car	3 - 85% 🟢	
Overcrowded households	<4 cases	
Households without central heating	4 - 2% 🟡	
Vacant properties	<5 cases	

	Thorpe in Balne	Doncaster
Housing Tenure		
Owned (including mortgaged)	98.3%	72.1%
Social rented (Council, housing assoc., etc)	0.0%	19.8%
Private rented	1.7%	5.7%
Living rent-free	0.0%	2.3%

The percentages above/below average show comparisons with the Doncaster average. A positive score indicates that there are proportionately more people or households in Thorpe in Balne meeting the criteria than expected. The car ownership figure is standardised to take account of household composition and the qualifications figure is standardised for age. Housing tenure figures are percentages of population according to tenure of their household. Source: 2001 Census (except for Vacant properties - calculated by Rotherham MBC from Council Tax data).

Hospital Admission Rates

	Thorpe in Balne	Doncaster
Emergency Admissions (all ages)	82.1 (53.1, 118.5) 🟡	86.5
Emergency Admissions (over 75s)	624.5 (272.3, 1168.7) 🟡	309.5
Admissions for Serious Accidents	<5 admissions	314.9

Emergency admission rates per 1,000 resident population per year. Serious accident admission rates per 100,000 resident population per year. All rates for 2001/2–2003/4, directly standardised for age and sex, with 95% confidence intervals (in brackets). Symbols indicate significance as described for death rates. For small communities, the numbers of cases are too small to release. Source: Contract data sets from Acute Trusts and 2001 Census populations.

Births and Child Health

There were <5 births in Thorpe in Balne between 2001 and 2003. The general period fertility rate is not significantly below the Doncaster average of 56.4 per 1,000.

	Thorpe in Balne	Doncaster
% low birth weight	<5 cases	8.5%

Low birth weight babies (below 2.5kg) as a percentage of all live and still births with 95% confidence intervals (in brackets). Source: ONS Annual Birth Extracts, 2001–2003.

Dental Health Data

The 2001/2 survey of 5 year-old school pupils gives the extent of dental decay:

	Thorpe in Balne	Doncaster
Decayed, missing or filled teeth per child	<5 pupils	% +/- average

Number of decayed, missing or filled teeth per child with 95% confidence intervals (in brackets). Source: Doncaster 5 Year-Old School Survey, 2001/2.

Modelled Prevalence Data

Using national survey data, we can predict that, in Thorpe in Balne:

- 34 adults (23.6% of the 16+ population) and 1 children (6.1%) are obese
- 6 adults (3.9% of the 16+ population) have coronary heart disease
- 3 males (3.3% of the population) and 3 females (4.2%) have diabetes