

CHAPTER 9

Children and Young People

9.1 Teenage Conceptions

‘England has one of the highest teenage conception rates in the developed world and the highest in Western Europe.’ This is how the national situation is summed up in *Saving Lives: Our Healthier Nation* (Department of Health, 1999). The UK rate of 22.9 live births in under 20s per 1000 females aged 15-19 is far in excess of the next highest, Portugal (16.7) and Iceland (16.3). The Netherlands (4.1) and Switzerland (4.0) really put our situation into perspective.

Rates of underage conception in the South Yorkshire Coalfields are far higher even than our national average. *Saving Lives: Our Healthier Nation* set a target, devised by the National Social Exclusion Unit, for under 18s; to halve the rate by 2010 from the 1995-7 baseline. Figure 9.1a shows that nationally and locally, particularly in Doncaster, the targets look challenging, to say the least. It is worth noting that within the definition of under 18 conceptions there are, potentially, planned pregnancies within marriage.

Previous analysis has tended to concentrate on conceptions in under 16s. Locally all three health authorities have extended the national target for under 18s to cover specifically under 16s as well. Similar patterns are evident (figure 9.1b), but Barnsley’s rates seem to be headed in the right direction. Previous annual reports have demonstrated that there is also extremely wide variation within the health authorities; there are wards where teenage conceptions are practically unknown.

Tackling this problem is not easy; it involves a major cultural change in many areas, something which can only be achieved through concerted action of agencies across all sectors.

9.2 Low Birthweight

Weight at birth is a good indicator of child and maternal health. Babies born to less healthy mothers are often smaller than usual. One cause of this is maternal smoking, but other factors which influence birthweight are ethnicity, multiple births, prematurity and quality of ante-natal care. Obviously, babies born early will be lighter than normal but as medical science improves, smaller babies are being born and surviving. Perinatal and infant mortality rates have been presented in previous reports, but small numbers make interpretation difficult at local level.

Nationally there has been an increasing proportion of births weighing less than 2500g (Figure 9.2). Figures for Barnsley, Doncaster and Rotherham suggest a moderate increase. Understanding these trends needs additional work to disentangle the effects of interventions and socioeconomic and demographic factors.

The Barnsley health community has set a target to have less than 7% of babies born with a birth weight below 2500g. Reducing maternal smoking will be an important part of achieving this target.

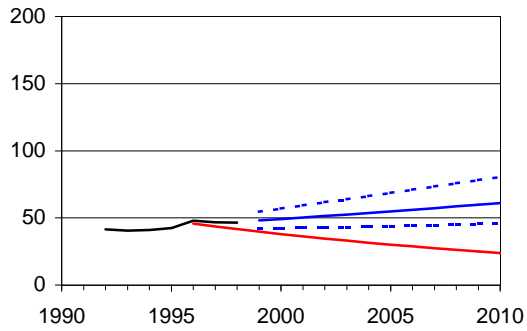
Figure 9.1a - Under 18 Teenage Conception Rates

Directly Standardised Rates per 1000 Resident Females aged 15-17

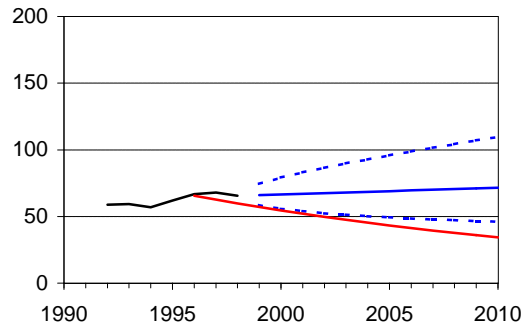
Target: OHN Target: To halve the rate of teenage pregnancies amongst under 18s by 2010 from the 1995-7 Baseline.

Sources: ONS: Teenage Conception Data, Mid-Year Estimates of Population.

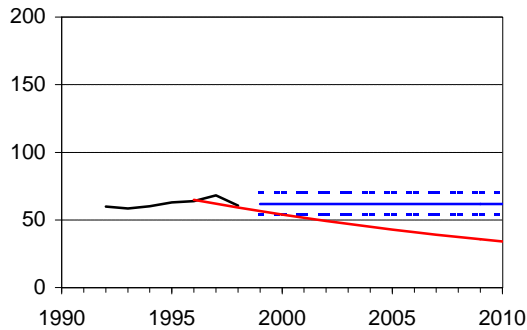
England & Wales



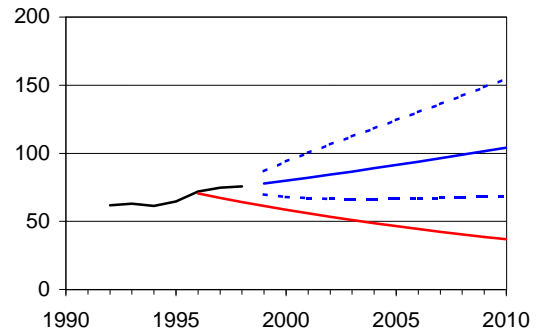
South Yorkshire Coalfields HAZ



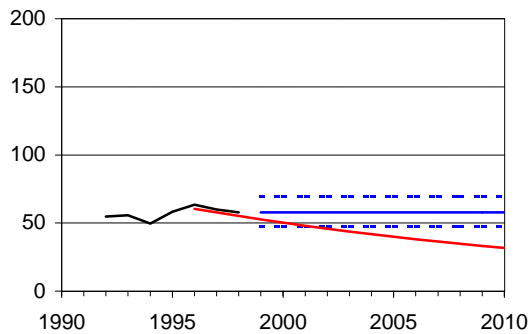
Barnsley HA



Doncaster HA



Rotherham HA



— Directly Standardised Rate
 — Forecast Rate
 95% Confidence Interval
 — OHN Target Line

Rates forecast with 95% confidence intervals by Holt's Method on logit-transformed data.

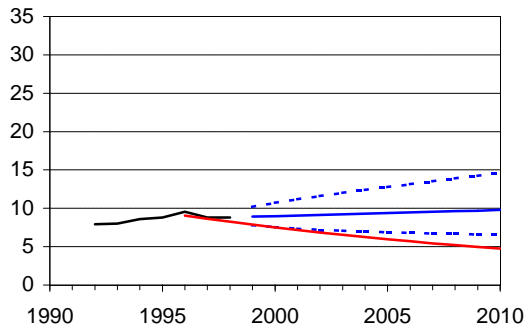
Figure 9.1b - Under 16 Teenage Conception Rates

Rates per 1000 Resident Females aged 13-15

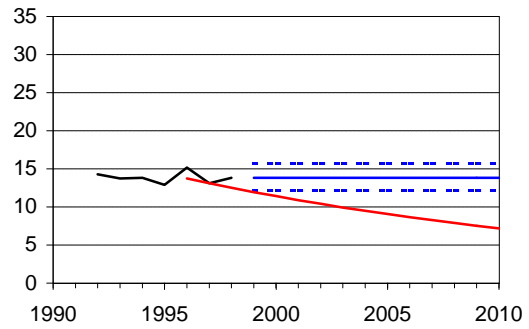
Target: To halve the rate of conceptions amongst under 16s by 2010 from the 1995-97 baseline.

Sources: ONS: Teenage Conception Data, Mid-Year Estimates of Population.

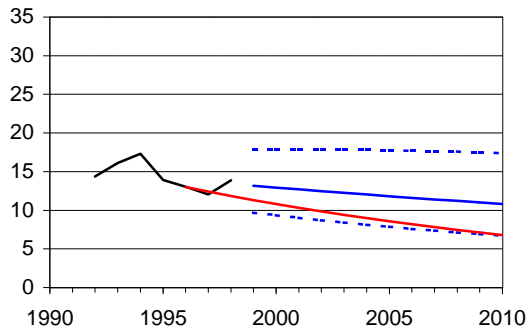
England & Wales



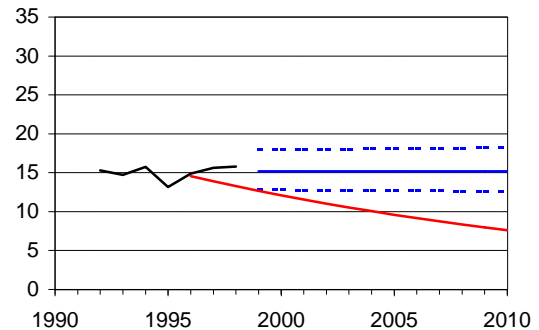
South Yorkshire Coalfields HAZ



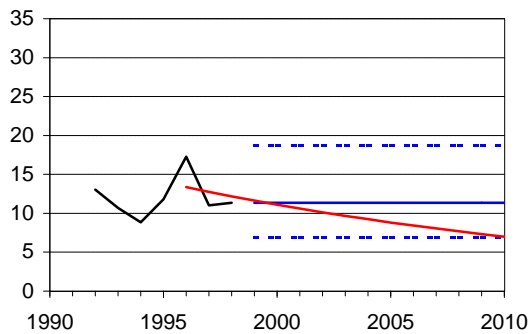
Barnsley HA



Doncaster HA



Rotherham HA



— Directly Standardised Rate
 — Forecast Rate
 95% Confidence Interval
 — HImP Target Line

Rates forecast with 95% confidence intervals by Holt's Method on logit-transformed data.

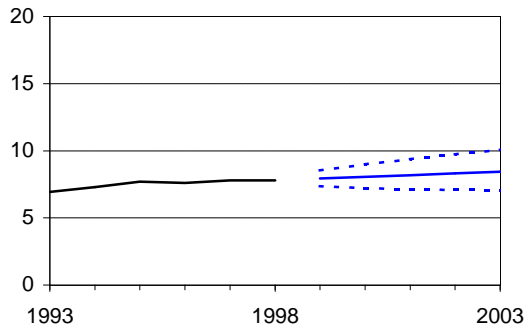
Figure 9.2 - Low Birth Weight Rates

Percentage of Total Births weighing under 2500 grammes

Target: Barnsley: Less than 7% by March 2003

Sources: Public Health Common Data Set

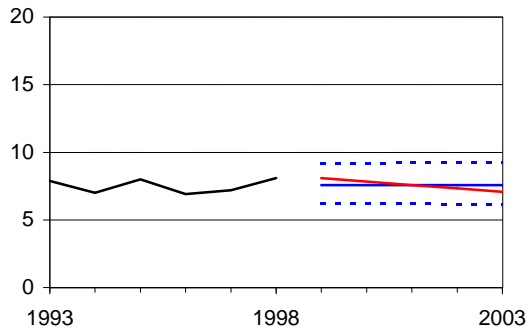
England & Wales



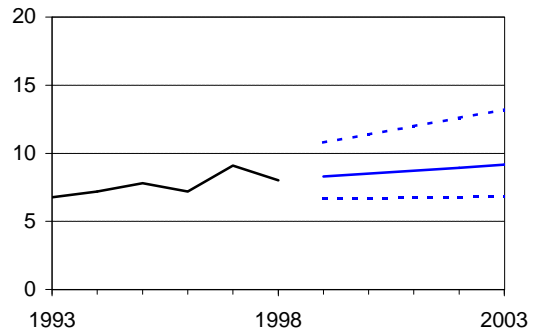
South Yorkshire Coalfields HAZ

Data Not Available

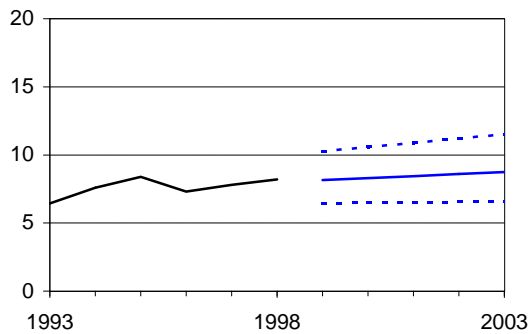
Barnsley HA



Doncaster HA



Rotherham HA



- Rate
- Forecast Rate
- 95% Confidence Interval
- HImP Target (where appropriate)

Rates forecast with 95% confidence intervals by Holt's Method on logit-transformed data.

9.3 Looked after children

Placements

Stability of placements for looked after children is an indicator of the appropriateness of placements (Table 9.3a). Older children are more likely to need further placements. Short term placements and care orders increase the number of placements in a year.

Table 9.3a – The percentage of children looked after at 31 March with three or more placements during the year.

Social Services Performance Indicator A1

%	Baseline 31/3/98	Actual Position		Planned Position		HImP Target 2001
		31/3/99	31/3/2000	31/3/01	31/3/02	
Barnsley	21	19	15	16	16	16
Doncaster	19	19	21	14	12	16
Rotherham	26	19	18	15	14	16

Source: Social Services Quality Protects Management Action Plan (BMBC Plan 2 2000, DMBC 2000-2001, RMBC 2000-2001)

National policy favours the maximum use of adoption to provide permanent families for children. This indicator is one way of measuring this (Table 9.3b). The national percentage is around 4.7%.

Table 9.3b – The number of looked after children adopted during a year as a percentage of children looked after at year ending 31 March.

Social Services Performance Indicator C23

%	Baseline 31/3/98	Actual Position		Planned Position		HImP Target 03/2003
		31/3/99	31/3/2000	31/3/01	31/3/02	
Barnsley	4.0	4.0	5.9	6.5	8.0	8.0
Doncaster	4.0	4.0	6.4	6.0	7.0	-
Rotherham	4.8	6.9	5.9	8.0	9.0	-

Source: Social Services Quality Protects Management Action Plan (BMBC Plan 2 2000, DMBC 2000-2001, RMBC 2000-2001)

For the majority of children, care in a family setting is preferred. There are some children who are better cared for in residential settings, but this is not generally true. Family settings are particularly appropriate for the under tens. Tables 9.3c and 9.3d show the local results for 'family setting' indicators.

Table 9.3c – Of children looked after at 31 March the proportion that are in foster placements or placed for adoption.

Social Services Performance Indicator B7

%	Baseline	Actual Position		Social Services Planned Position			HImP Target 2002
	31/3/98	31/3/99	30/9/99	31/3/00	31/3/01	31/3/02	
			9				
Barnsley	59	60	61	64	68	74	74
Doncaster	57	60	65	65	68	70	-
Rotherham	72	71	68	71	71	-	

Source: Social Services Quality Protects Management Action Plan (BMBC Plan 2 2000, DMBC 2000-2001, RMBC 2000-2001)

Table 9.3d – Of children looked after at 31 March aged under 10 the proportion that are in foster placements or placed for adoption.

Social Services Performance Indicator C22

%	Baseline	Actual Position		Planned Position		HImP Target 2002
	31/3/98	31/3/99	31/3/2000	31/3/01	31/3/02	
			0			
Barnsley	70	71	71	75	77	77
Doncaster	75	79	72	83	85	-
Rotherham	81	78	76	71	71	

Source: Social Services Quality Protects Management Action Plan (BMBC Plan 2 2000, DMBC 2000-2001, RMBC 2000-2001)

The final indicator in this set reflects the success of local authorities in promoting long-term stability for looked after children. It is reasonable to expect that for children looked after for more than four years, a substantial proportion of that time is spent with the same foster parents or an adoptive placement is found (Table 9.3e).

Table 9.3e – Of children looked after at 31 March who have been looked after continuously for more than 4 years, the proportion who have been in their foster placement for at least 2 years.

Social Services Performance Indicator D35

%	Baseline	Actual Position		Planned Position		HImP Target
	31/3/98	31/3/99	31/3/2000	31/3/01	31/3/02	2002
Barnsley	-	41	40	50	61	61
Doncaster		38	33	40	42	-
Rotherham	45	40	50	43	44	

Source: Social Services Quality Protects Management Action Plan (BMBC Plan 2 2000, DMBC 2000-2001, RMBC 2000-2001)

Registrations

Re-registrations on the Child Protection Register indicate a return to need (Table 9.3f). Very low figures can be due to children being kept on the register too long (See Table 9.3g) or left unreviewed (See Table 9.3h). High registration rates lead to high re-registrations. The national target for 2001/02 is 17.2%.

Ideally, children at risk should be included on the register until the risk has passed. This requires reviews, where appropriate, and de-registrations when this is seen as possible.

The combination of these three indicators gives some impression of performance.

Table 9.3f – The percentage of children registered during the year on the child protection register who had been previously registered.

Social Services Performance Indicator A3

%	Baseline	Actual Position		Planned Position		HImP Target
	31/3/98	31/3/99	31/3/2000	31/3/01	31/3/02	2002
Barnsley	17	18	16	14	14	14
Doncaster	11	21	20	13	12	10
Rotherham	21	25	21	24	3	10

Source: Social Services Quality Protects Management Action Plan (BMBC Plan 2 2000, DMBC 2000-2001, RMBC 2000-2001)

Table 9.3g– The proportion of children de-registered from the child protection register during the year ending 31 March who have been on the register for at least two years.

Social Services Performance Indicator C21

%	Baseline	Actual Position		Planned Position		HImP Target
	31/3/98	31/3/99	31/3/2000	31/3/01	31/3/02	
			0			
Barnsley	5	11	5	10	10	10
Doncaster	8	19	7	12	10	-
Rotherham	3	7	5	3	2	

Source: Social Services Quality Protects Management Action Plan (BMBC Plan 2 2000, DMBC 2000-2001, RMBC 2000-2001)

Table 9.3h – The percentage of child protection register cases which should have been reviewed that were reviewed.

Social Services Performance Indicator C20

%	Baseline	Actual Position		Planned Position		HImP Target
	31/3/98	31/3/99	31/3/2000	31/3/01	31/3/02	
			0			
Barnsley	100	100	99	100	100	100
Doncaster	76	54	79	95	100	-
Rotherham	94	90	86	100	100	

Source: Social Services Quality Protects Management Action Plan (BMBC Plan 2 2000, DMBC 2000-2001, RMBC 2000-2001)

Educational and employment outcomes

The national target for this indicator (table 9.3i) is that 50% of young people will have at least one GCSE at grades A*-G or a GNVQ by 2000/01 and 75% by 2002/03. Higher educational attainment leads to better health experience and a better chance of employment. Since these figures relate to 'looked after' young people it needs to be recognised that many of these teenagers have learning difficulties.

Table 9.3i – The proportion of those young people leaving care aged 16 or over with at least 1 GCSE at Grades A*-G or a GNVQ.

Social Services Performance Indicator A2

%	Baseline	Actual Position		Planned Position		HImP Target	
	31/3/98	31/3/99	31/3/2000	31/3/01	31/3/02	2001	2003
Barnsley	-	21	29	50	75 (2003)	50	-
Doncaster	13	22	20	25	35	50	75
Rotherham	28	36	21	60	70	50	75

Source: Social Services Quality Protects Management Action Plan (BMBC Plan 2 2000, DMBC 2000-2001, RMBC 2000-2001)

One reason for poor educational attainment could mean absence from school. Table 9.3j shows the values for September 1999. As yet, there are no national figures for comparison (due out October 2001).

Table 9.3j – Of children looked after at 30 September that have been looked after continuously for 12 months and are of school age, the proportion who have missed at least 25 days schooling for any reason during the school year.

Social Services Performance Indicator C24

%	Baseline	Actual Position		Social Services Planned Position			HImP Target
	30/9/98	31/3/99	30/9/99	31/3/00	31/3/01	31/3/02	2002
Barnsley	-	-	12	12	11	10	10
Doncaster	-	-	14	10	8	8	-
Rotherham			14	13	12	11	

Source: Social Services Quality Protects Management Action Plan (BMBC Plan 2 2000, DMBC 2000-2001, RMBC 2000-2001)

Prevention

The family support indicator (Table 9.3k) is a proxy indicator for access to preventative services. The national percentage was 36% for 1999/00. An increase in this proportion would reflect a move towards preventative services and may lead to a reduction in the requirement from children to be looked after by the local authority.

Table 9.3k – Expenditure on children in need (and not looked after) as a percentage of expenditure on all children’s services.

Social Services Performance Indicator E44

%	Baseline	Actual Position		Social Services Planned Position			HImP Target
	31/3/98	31/3/99	30/9/99	31/3/00	31/3/01	31/3/02	
Barnsley	-	21	23	-	-	-	Increase
Doncaster	-	23	23	24	25	28	-
Rotherham	-	18	20 (est.)	20	21	25	-

Source: Social Services Quality Protects Management Action Plan (BMBC Plan 2 2000, DMBC 2000-2001, RMBC 2000-2001)
Health

The good health of looked after children is an important part of their care. Older children have the right to refuse but ideally a high proportion of looked after children should receive basic health care. Table 9.3l shows the percentage of looked after children who have had an annual health check; Table 9.3m shows the percentage with up to date immunisations and Table 9.3n shows the percentage who have had a dental check. The Social Service Performance Indicator C19 is a composite of these three figures.

Table 9.3l – Of children looked after for at least 12 months, the average percentage who had an annual health assessment in the previous year.

Social Services Performance Indicator C19

%	Baseline	Actual Position		Social Services Planned Position			HImP Target
	31/3/98	31/3/99	30/9/99	31/3/00	31/3/01	31/3/02	
Barnsley	37	74	74	78	82	82	82
Doncaster	62	46	52	85	90	90	-
Rotherham	68	-	72	75	80	80	

Source: Social Services Quality Protects Management Action Plan (BMBC Plan 2 2000, DMBC 2000-2001, RMBC 2000-2001)

Table 9.3m – Of children looked after for at least 12 months, the average percentage with routine immunisations up to date.

Social Services Performance Indicator C19

%	Baseline	Actual Position		Social Services Planned Position			HImP Target
	31/3/98	31/3/99	30/9/99	31/3/00	31/3/01	31/3/02	2002
Barnsley	97	95	95	95	95	95	95
Doncaster	74	67	77	85	90	95	-
Rotherham	84	-	-	100	100	100	

Source: Social Services Quality Protects Management Action Plan (BMBC Plan 2 2000, DMBC 2000-2001, RMBC 2000-2001)
Rotherham data from a sample.

Table 9.3n – Of children looked after for at least 12 months, the average percentage checked by a dentist in the previous year.

Social Services Performance Indicator C19

%	Baseline	Actual Position		Social Services Planned Position			HImP Target
	31/3/98	31/3/99	30/9/99	31/3/00	31/3/01	31/3/02	2002
Barnsley	97	82	82	83	85	87	87
Doncaster	17	37	41	60	80	90	-
Rotherham	66	76	-	100	100	100	

Source: Social Services Quality Protects Management Action Plan (BMBC Plan 2 2000, DMBC 2000-2001, RMBC 2000-2001)

On entering care, it is desirable that children should be offered a health check. Table 9.3o shows progress towards this target.

Table 9.3o – Percentage of children entering public care who have had a comprehensive health assessment.

%	Baseline	Actual Position		Social Services Planned Position			HImP Target
	31/3/98	31/3/99	30/9/99	31/3/00	31/3/01	31/3/02	
Barnsley	64	59	59	70	85	95	-
Doncaster	-	5.5	8.2	40	60	80	100
Rotherham	65	61	-	75	80	80	100

Source: Social Services Quality Protects Management Action Plan (BMBC Plan 2 2000, DMBC 2000-2001, RMBC 2000-2001)

Crime

Barnsley has a target to reduce the proportion of children over ten who are cautioned or convicted to 2.9% by 2002. Figures are not available for individual districts, but the current figure in South Yorkshire is 3.2%. Reducing this figure will require joint work across the county.

Inspections

Children's homes should be inspected regularly. At present, all homes are inspected at the appropriate time.

9.4 Immunisation

Immunisation of children as part of a national programme is an excellent way to improve health. Older readers will remember the effects of polio and measles epidemics in the middle of the twentieth century. To prevent the return of these and other infectious diseases it is important that all children who are able to receive vaccines are offered them. The immunisation rates shown in Table 9.4 reflect the efforts of parents and NHS staff. Some lower rates may be due to concerns about the safety of vaccines. MMR (measles, mumps and rubella vaccine) uptake rates are close to the target in Barnsley and Doncaster but not in Rotherham. It can be clearly stated that the benefits of immunisation for all of the vaccines in the table far outweigh the theoretical risks.

Table 9.4 – Percentage of children immunised by their 2nd birthday – national target 95%

Health Authority	Year	Percentage Immunised by their 2 nd birthday					
		Diphtheria	Tetanus	Polio	Pertussis	HiB	MMR
Barnsley	1997-1998	98	98	96	98	98	94
	1998-1999	98	98	97	98	98	94
	1999-2000	98	98	98	97	98	94
Doncaster	1997-1998	97	97	95	96	96	94
	1998-1999	96	96	94	96	95	93
	1999-2000	97	97	97	95	96	93
Rotherham	1997-1998	94	94	93	93	94	87
	1998-1999	94	94	93	94	93	87
	1999-2000	94	94	94	93	94	85

Hib* : Haemophilus Influenza Type B.

Source: DoH Statistical Bulletins 1998/38, 1999/28, 2000/26 - NHS Immunisation Statistics, England (COVER/Korner Data)

9.5 Educational Targets

Figures 9.5a-d and table 9.5 reflect educational attainment targets for children and young people. It is well recognised that better qualifications lead to better employment opportunities and better health in later life.

Table 9.5 – Average points score for pupils aged 16+ (GCSEs)

	Actual Position			HImP Target		
	1998	1999	2000	2000	2001	2002
England	37.0	38.1	38.9			
Barnsley	29.3	30.6	32.2	-	-	-
Doncaster	31.1	32.6	33.3	33.1	34	35
Rotherham	32.7	34.9	35.6	-	-	-

Source: DfEE (www.dfes.gov.uk/perform)

Note: 2000 actual figures include GNVQs, previously excluded.

Reference:

Department of Health (1999). *Saving Lives: Our Healthier Nation*. London: The Stationery Office.

Figure 9.5a - Key Stage 2 English Results

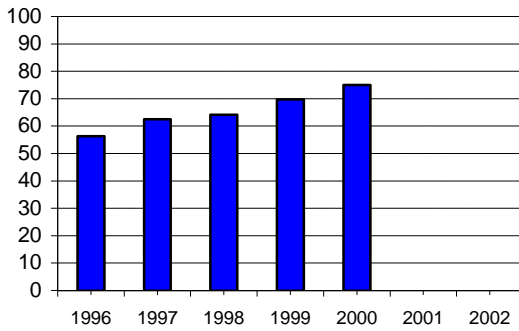
The proportion of children in the Local Authority attaining Level 4 or better in the English test at the end of Key Stage 2
Percentage of pupils aged 11

Target: Doncaster: To achieve a 67% in 2000, 73% in 2001 and 79% in 2002.

Sources: DfEE (www.dfes.gov.uk/perform)

Notes: The 2000 figures are provisional, Quality Protects Performance Indicator 3

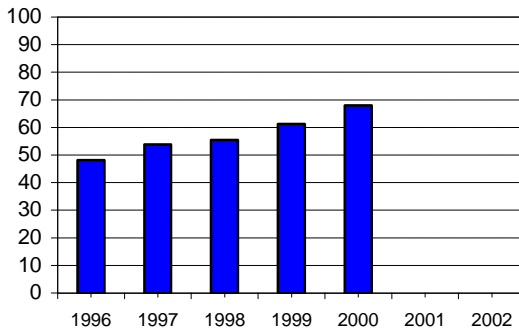
England & Wales



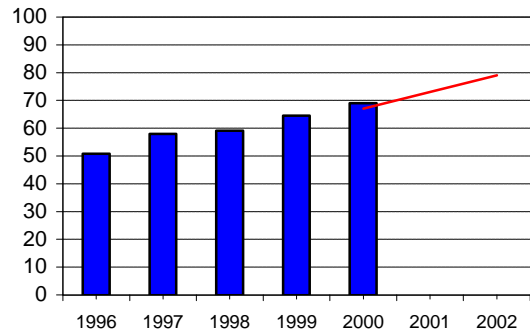
South Yorkshire Coalfields HAZ

Data Not Available

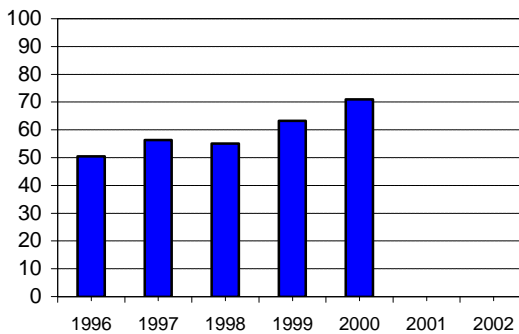
Barnsley



Doncaster



Rotherham



— HImP Target (where applicable)

Figure 9.5b - Key Stage 2 Mathematics Results

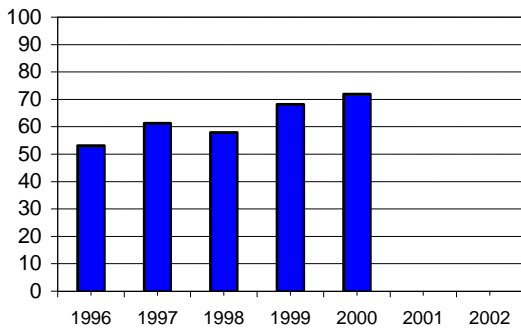
The proportion of children in the Local Authority attaining Level 4 or better in the mathematics test at the end of Key Stage 2
Percentage of pupils aged 11

Target: Doncaster: To achieve a 63% in 2000, 68% in 2001 and 74% in 2002.

Sources: DfEE (www.dfes.gov.uk/perform)

Notes: The 2000 figures are provisional, Quality Protects Performance Indicator 3

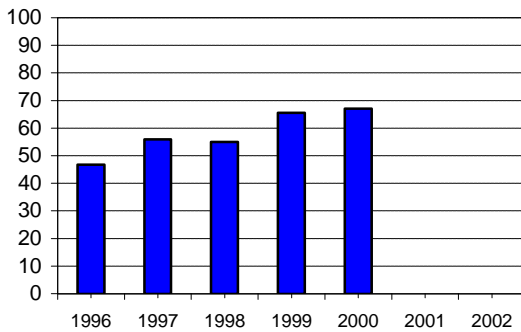
England & Wales



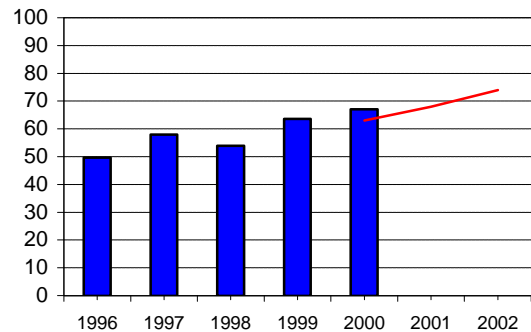
South Yorkshire Coalfields HAZ

Data Not Available

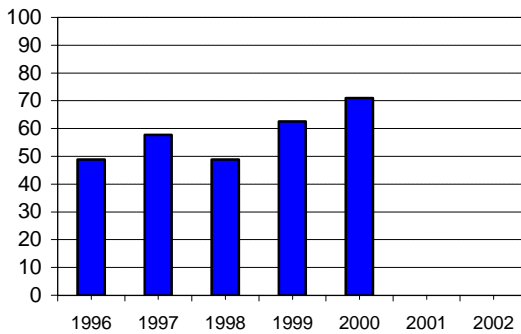
Barnsley



Doncaster



Rotherham



— HImP Target (where applicable)

Figure 9.5c - 5 GCSE Grades A-C

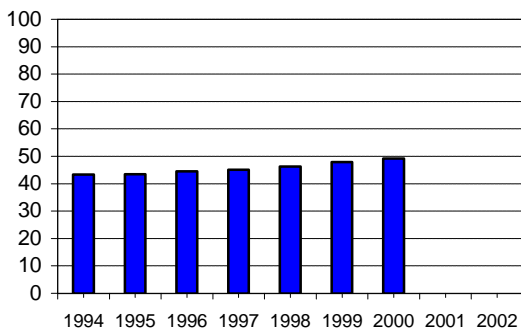
The proportion of children in the Local Authority achieving 5 or more passes at GCSE grades A-C
 Percentage of pupils aged 15 at the start of the appropriate school year

Target: Doncaster: To achieve a 37.3% in 2000, 39% in 2001 and 43% in 2002.

Sources: DfEE (www.dfes.gov.uk/perform)

Notes: The 2000 figures include both GCSE and GNVQ results, previous years were GCSEs only

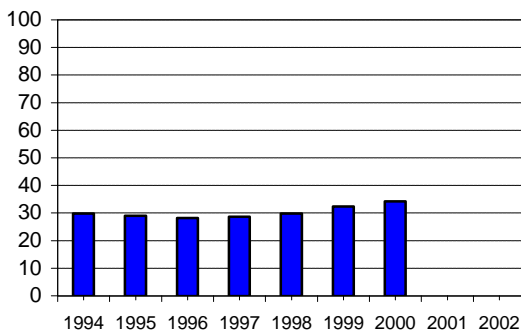
England & Wales



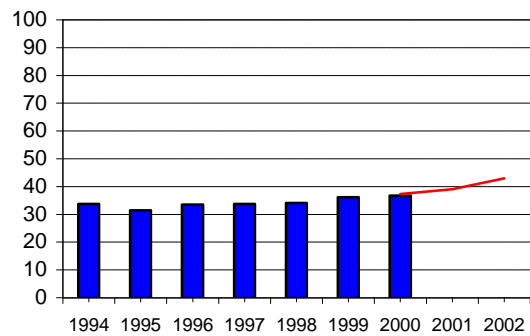
South Yorkshire Coalfields HAZ

Data Not Available

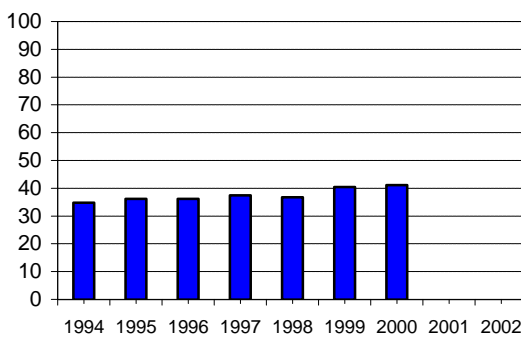
Barnsley



Doncaster



Rotherham



— HImP Target (where applicable)

Figure 9.5d - 5 GCSE Grades A-G

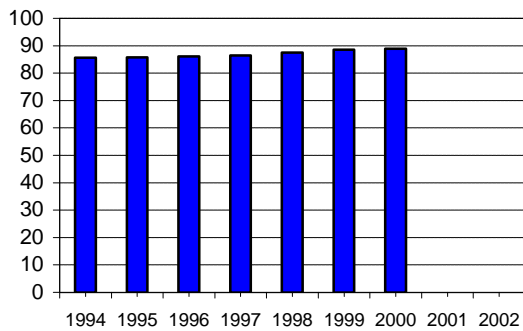
The proportion of LEA achieving 5 GCSE grades A-G
Percentage of pupils aged 15 at the start of the appropriate school year

Target: Doncaster: To achieve a 91.7% in 2000, 93.4% in 2001 and 95% in 2002.

Sources: DfEE (www.dfes.gov.uk/perform)

Notes: The 2000 figures include both GCSE and GNVQ results, previous years were GCSEs only

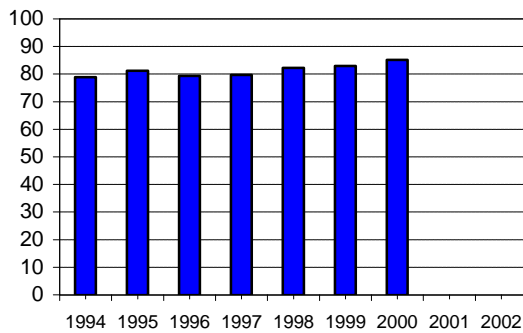
England & Wales



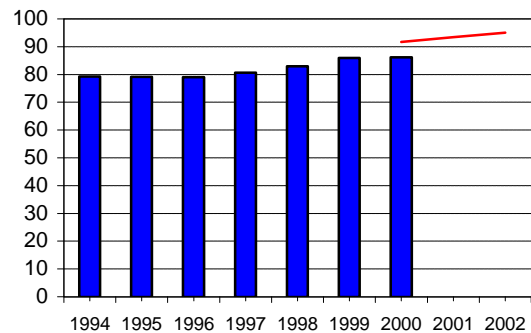
South Yorkshire Coalfields HAZ

Data Not Available

Barnsley HA



Doncaster HA



Rotherham HA

