

Indices of Deprivation – 2004

A Doncaster Summary

Introduction

The 2004 indices of multiple deprivation (IMD 2004) measure deprivation at the small area level. The indices assume deprivation to mean communities that lack adequate resources to achieve the diet, housing, facilities, education, social conditions and economic welfare that are customary in this society at this time. The data are presented at super output area (SOA) level. SOAs are areas of approximately 1,500 people and are built up from output areas (OAs), a geography derived from the 2001 census. Doncaster has 960 OAs and 193 SOAs. The indices are also calculated for districts as a whole.

The IMD 2004 has seven domains: income; employment; health and disability; education, skills and training; barriers to housing and services; the living environment; and crime. These domains are amalgams of individual indicators. For example the income domain is constructed from the following data: people on income support; people on job seekers allowance; people on working families tax credit; people on disabled persons tax credit; and supported asylum seekers. The domains have been weighted to reflect current understanding of the contribution each makes to overall levels of deprivation. Consequently Income and employment deprivation are weighted more heavily than environmental deprivation or crime.

Table 1: Weightings of the domains comprising the IMD 2004

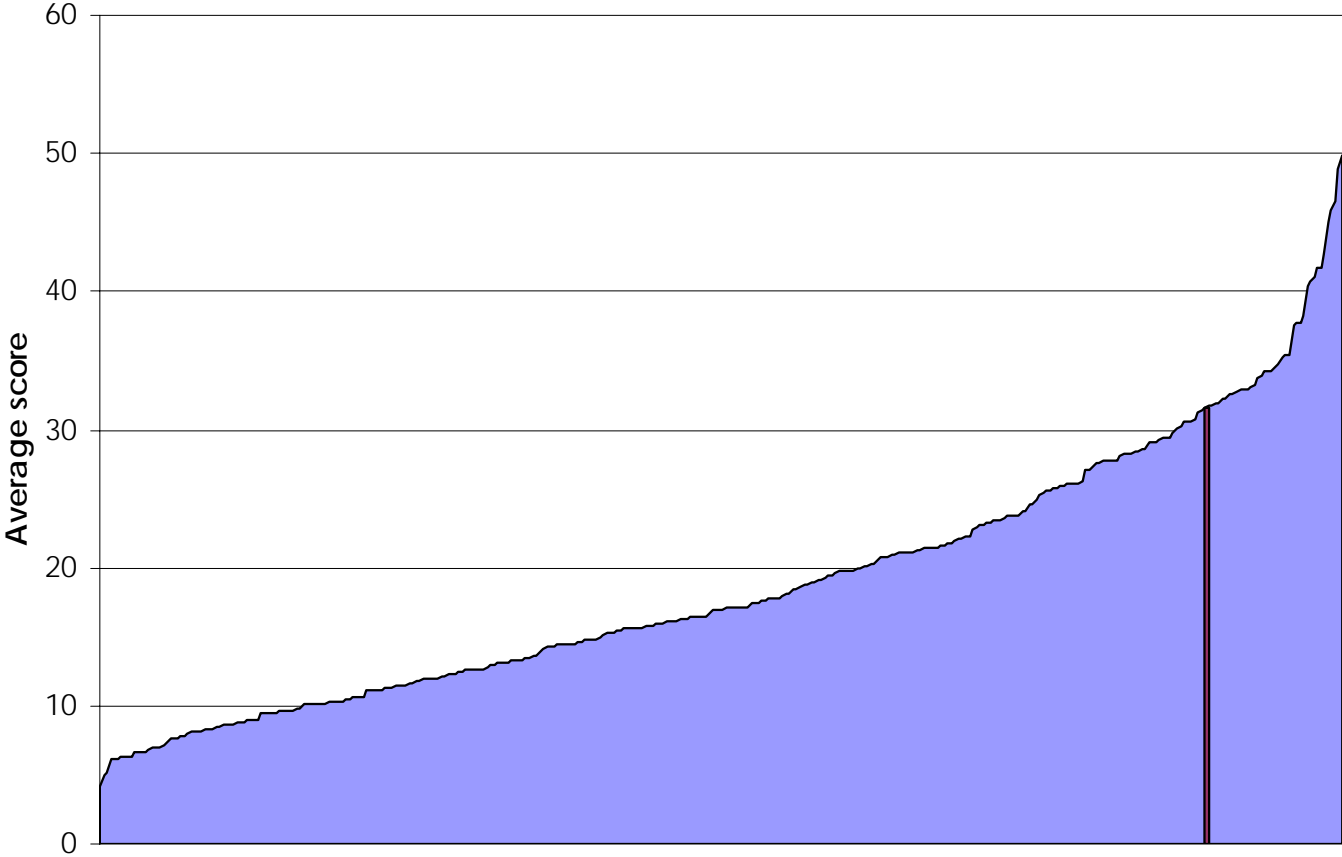
Income	22.5%
Employment	22.5%
Health and disability	13.5%
Education, skills, and training	13.5%
Barriers to housing and services	9.3%
Crime	9.3%
Living Environment	9.3%

Included as part of the IMD 2004 are two supplementary indices. The income deprivation affecting children index (IDAC) is a subset of the income domain and illustrates the percentage of children under 16 in families in receipt of benefits. Income deprivation affecting older people index (IDAOP) measures the percentage of people aged over 60 claiming benefits.

The original material on which this report is based, and updates, can be accessed on the web site of the Office of the Deputy Prime Minister: http://www.odpm.gov.uk/stellent/groups/odpm_control/documents/contentservertemplate/odpm_index.hcst?n=4610&l=3 (accessed 12 April 2005).

Doncaster's position in England: Average Score

Figure 1: Average score by district



Line shows Doncaster's position when district scores are arranged in ascending order.

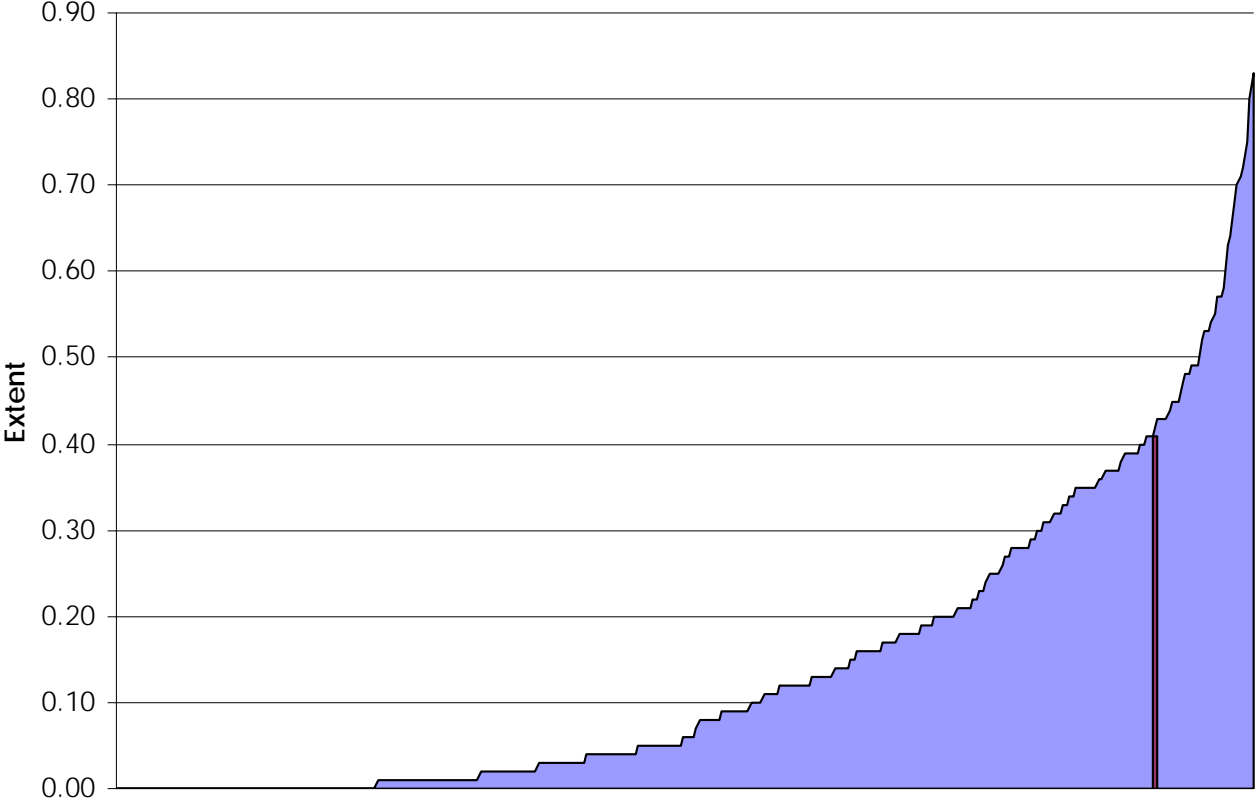
The average score for each district is the population weighted average of the combined scores for the SOAs in that district. The districts are ranked from most deprived (Liverpool) ranked 1st to least deprived (Hart). Doncaster has a score of 31.5 and is ranked 40th of the 354 districts in England. Within the region of Yorkshire and the Humber, Doncaster is the 4th most deprived district behind: Hull, Barnsley and Bradford.

Table 2: IMD 2004 scores for districts in the Yorkshire and the Humber region

District	Average Score	National Rank	District	Average Score	National Rank
Kingston upon Hull	41.13	9	Scarborough	24.09	91
Barnsley	32.99	28	North Lincolnshire	21.23	121
Bradford	32.93	30	East Riding of Yorkshire	15.34	208
Doncaster	31.50	40	York	14.51	219
North East Lincolnshire	29.36	52	Selby	13.09	239
Wakefield	29.08	54	Ryedale	12.92	242
Sheffield	28.42	60	Richmondshire	12.49	251
Rotherham	28.19	63	Craven	11.94	262
Leeds	27.68	68	Harrogate	11.08	277
Kirklees	26.15	77	Hambleton	10.38	285
Calderdale	25.44	86			

Doncaster's position in England: Extent

Figure 2: Proportion of the population living in the most deprived SOAs in England



Line shows Doncaster's position when district scores are arranged in ascending order.

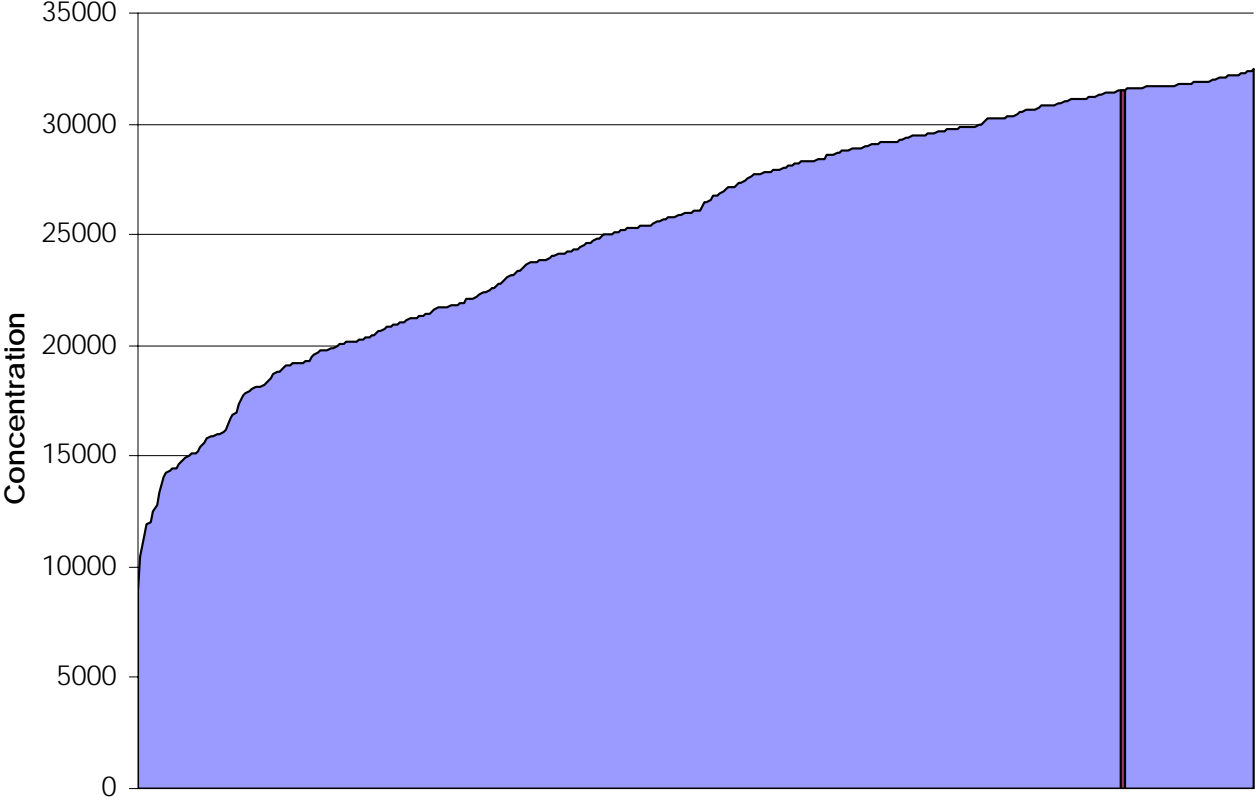
Extent indicates how widespread high levels of deprivation are within districts. The extent score is the proportion of the population living in the most deprived SOAs in the country. All of the people in the most deprived decile (10%) of SOAs are counted plus a sliding proportion of the population in the next two deciles, starting with 95% of the people in the 11th percentile down to 5% of the people in the 29th. Nationally Doncaster is ranked 32nd with a score of 0.41. In Yorkshire and the Humber region Doncaster ranks 4th.

Table 3: Extent scores of districts in the Yorkshire and the Humber region

District	Extent	National Rank	District	Extent	National Rank
Kingston upon Hull	0.57	12	Scarborough	0.21	89
Barnsley	0.43	28	North Lincolnshire	0.16	117
Bradford	0.43	31	York	0.08	170
Doncaster	0.41	32	East Riding of Yorkshire	0.08	171
North East Lincolnshire	0.37	43	Selby	0.03	217
Sheffield	0.35	51	Craven	0.02	237
Wakefield	0.35	56	Harrogate	0.01	249
Rotherham	0.32	62	Hambleton	0	297
Leeds	0.31	64	Ryedale	0	298
Kirklees	0.28	73	Richmondshire	0	298
Calderdale	0.25	83			

Doncaster's position in England: Local Concentration

Figure 3: The population-weighted average of the ranks of a district's most deprived SOAs



Line shows Doncaster's position when district scores are arranged in ascending order.

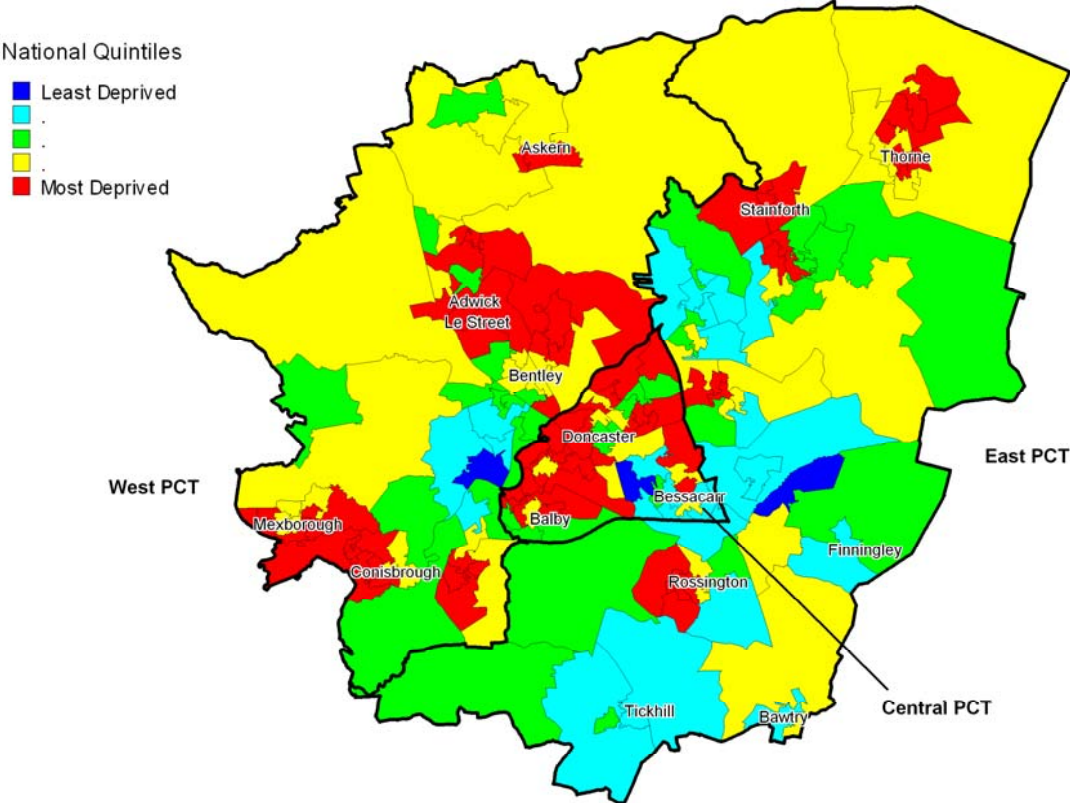
The local concentration score measures 'hot spots' of deprivation. It is the mean of the population-weighted rank of the districts 10% most deprived population. In this calculation the ranks of the SOAs have been reversed so that a high score will indicate a greater concentration of deprivation. Doncaster's local concentration score is 31532.48 and ranks 43rd of the 354 districts. Doncaster is ranked 7th in Yorkshire and the Humber region behind the South Yorkshire districts of Sheffield and Barnsley.

Table 4: Local Concentration scores of districts in the Yorkshire and the Humber region

District	Local Concentration	National Rank	District	Local Concentration	National Rank
Kingston upon Hull	32230.78	6	Kirklees	30804.29	68
Bradford	32113.25	11	North Lincolnshire	30480.97	76
Leeds	31800.28	24	East Riding of Yorkshire	27922.09	153
Sheffield	31720.23	30	York	27403.93	162
North East Lincolnshire	31714.73	31	Selby	24362.38	215
Barnsley	31608.69	40	Craven	21506.73	261
Doncaster	31532.48	43	Harrogate	21203.4	268
Rotherham	31139.34	56	Hambleton	20629.9	278
Wakefield	31011.04	61	Richmondshire	19238.08	302
Calderdale	30851.74	65	Ryedale	18728.92	311
Scarborough	30815.67	67			

Index of Multiple Deprivation

Map 1: The IMD 2004 in Doncaster



The PCT boundaries on this map reflect the 'conventional' boundaries not the electoral ward based statutory boundaries used in the analysis.

There are 32,482 SOAs in England. Using the IMD 2004 scores for each SOA the England population has been divided into deprivation quintiles (20%) using the mid 2001 SOA population estimates¹. Nationally 20% of the population are resident in the most deprived quintile, 20% in the next and so on. The rest of this report uses these nationally defined quintiles to analyse levels of deprivation in Doncaster and its PCTs.

In Doncaster 41.3% of the population live with in the most deprived national quintile and only 3 SOAs or about 1.7% of the population live in the least deprived quintile. In Central PCT more than half the population are resident in areas that are in the most deprived quintile.

Table 5: Resident population in Doncaster's PCTs by deprivation quintile

Quintile	Central PCT		East PCT		West PCT		Doncaster	
	No	%	No	%	No	%	No	%
Most deprived	38,170	55.2%	30,470	27.4%	49,230	46.9%	117,870	41.3%
2	10,130	14.6%	26,410	23.7%	34,400	32.7%	70,940	24.9%
3	13,310	19.2%	21,580	19.4%	18,360	17.5%	53,250	18.7%
4	6,020	8.7%	29,540	26.6%	3,050	2.9%	38,610	13.5%
Least deprived	1,550	2.2%	3,250	2.9%	0	0.0%	4,800	1.7%
Total	69,180	100.0%	111,250	100.0%	105,040	100.0%	285,470	100.0%

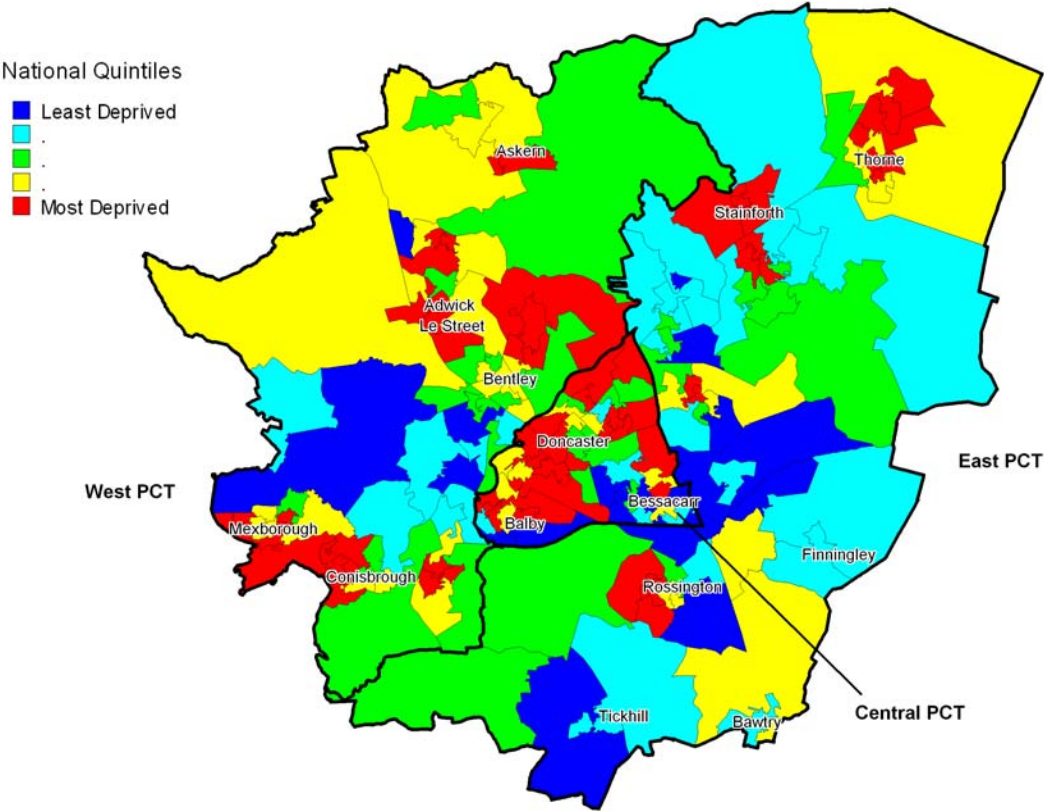
PCTs based on the pre-2004 electoral ward boundaries to reflect the current statutory boundaries

Population: People of all ages

¹ Mid-2001 SOA population estimates, Office of the Deputy Prime Minister. http://www.odpm.gov.uk/odpm/SOA/SOAEstimates_rounded.xls (accessed 12 April 2005).

Income Deprivation

Map 2: Income Deprivation in Doncaster



The PCT boundaries on this map reflect the 'conventional' boundaries not the electoral ward based statutory boundaries used in the analysis.

This domain captures the proportion of the population experiencing income deprivation. The domain is constructed from the following indicators:

- Adults and children in Income Support households,
- Adults and children in Income Based Job Seekers Allowance households,
- Adults and children in Working Families Tax Credit households whose equivalised income (excluding housing benefits) is below 60% of median before housing costs,
- Adults and children in Disabled Person's Tax Credit households whose equivalised income (excluding housing benefits) is below 60% of median before housing costs,
- National Asylum Support Service (NASS) supported asylum seekers in England in receipt of subsistence only and accommodation support.

The income domain data shows that 35.6% of the population of Doncaster is in the nationally defined most-deprived quintile.

Table 6: Income deprivation by PCT and income deprivation quintile

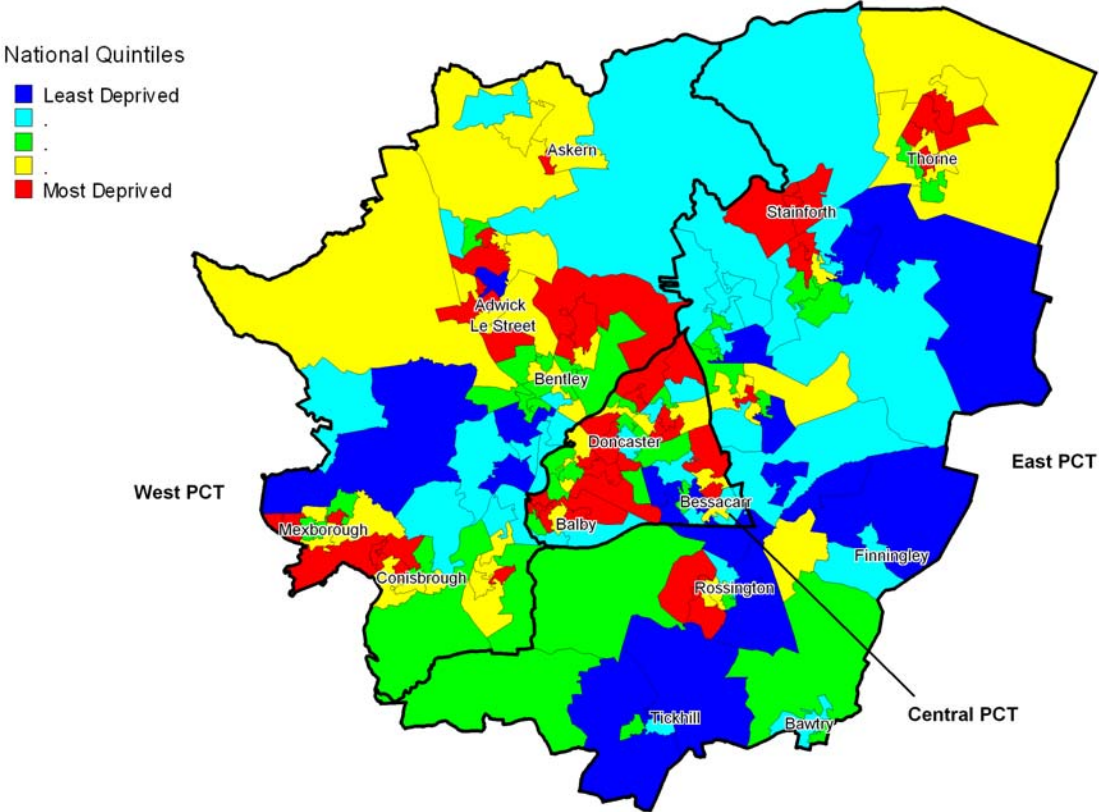
Quintile	Central PCT		East PCT		West PCT		Doncaster	
	No	%	No	%	No	%	No	%
Most deprived	33,880	49.0%	27,610	24.8%	40,080	38.2%	101,570	35.6%
2	11,460	16.6%	18,060	16.2%	33,170	31.6%	62,690	22.0%
3	10,630	15.4%	17,110	15.4%	21,310	20.3%	49,050	17.2%
4	6,000	8.7%	33,570	30.2%	6,030	5.7%	45,600	16.0%
Least deprived	7,210	10.4%	14,900	13.4%	4,450	4.2%	26,560	9.3%
Total	69,180	100.0%	111,250	100.0%	105,040	100.0%	285,470	100.0%

PCTs based on the pre-2004 electoral ward boundaries to reflect the current statutory boundaries

Population: People of all ages

Income Deprivation and Children

Map 3: Income deprivation affecting children in Doncaster



The PCT boundaries on this map reflect the 'conventional' boundaries not the electoral ward based statutory boundaries used in the analysis.

In addition to the income domain, two supplementary indicators have been developed. The Income Deprivation Affecting Children Index (IDACI) is the percentage of children living in families in receipt of benefits or tax credits (income support, jobseekers allowance, working families tax credit disables persons tax credit) whose income is below 60% of the national median income before housing costs.

Just over 30% of Doncaster children and just under half (47.6%) of Central PCT's children reside in the most deprived income quintile.

Table 7: Children affected by income deprivation by PCT and deprivation quintile

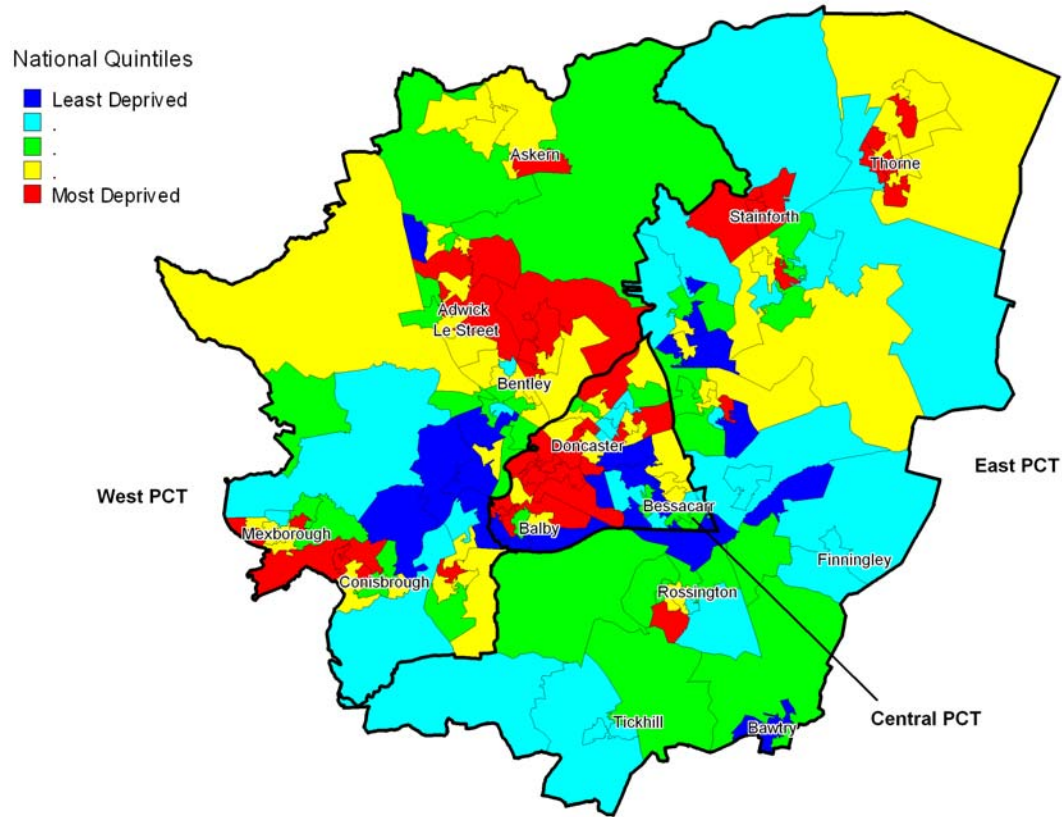
Quintile	Central PCT		East PCT		West PCT		Doncaster	
	No	%	No	%	No	%	No	%
Most deprived	6,850	47.6%	4,990	21.8%	6,440	28.4%	18,280	30.5%
2	2,070	14.4%	4,560	19.9%	8,260	36.4%	14,890	24.8%
3	2,800	19.5%	3,540	15.5%	4,670	20.6%	11,010	18.4%
4	1,850	12.9%	6,190	27.1%	2,360	10.4%	10,400	17.4%
Least deprived	810	5.6%	3,600	15.7%	950	4.2%	5,360	8.9%
Total	14,380	100.0%	22,880	100.0%	22,680	100.0%	59,940	100.0%

PCTs based on the pre-2004 electoral ward boundaries to reflect the current statutory boundaries

Population: Children aged under 16 years

Income and Older People

Map 4: Income deprivation affecting older people in Doncaster



The PCT boundaries on this map reflect the 'conventional' boundaries not the electoral ward based statutory boundaries used in the analysis.

A second supplementary index is the Income Deprivation Affecting Older People Index (IDAOP). This index comprises the percentage of the SOAs population aged over 60 and who are on benefits or tax credits.

Thirty four and a half percent of Central PCT's population who are aged over 60 years are in the most deprived quintile for this indicator.

Table 8: Older people affected by income deprivation by PCT and deprivation quintile

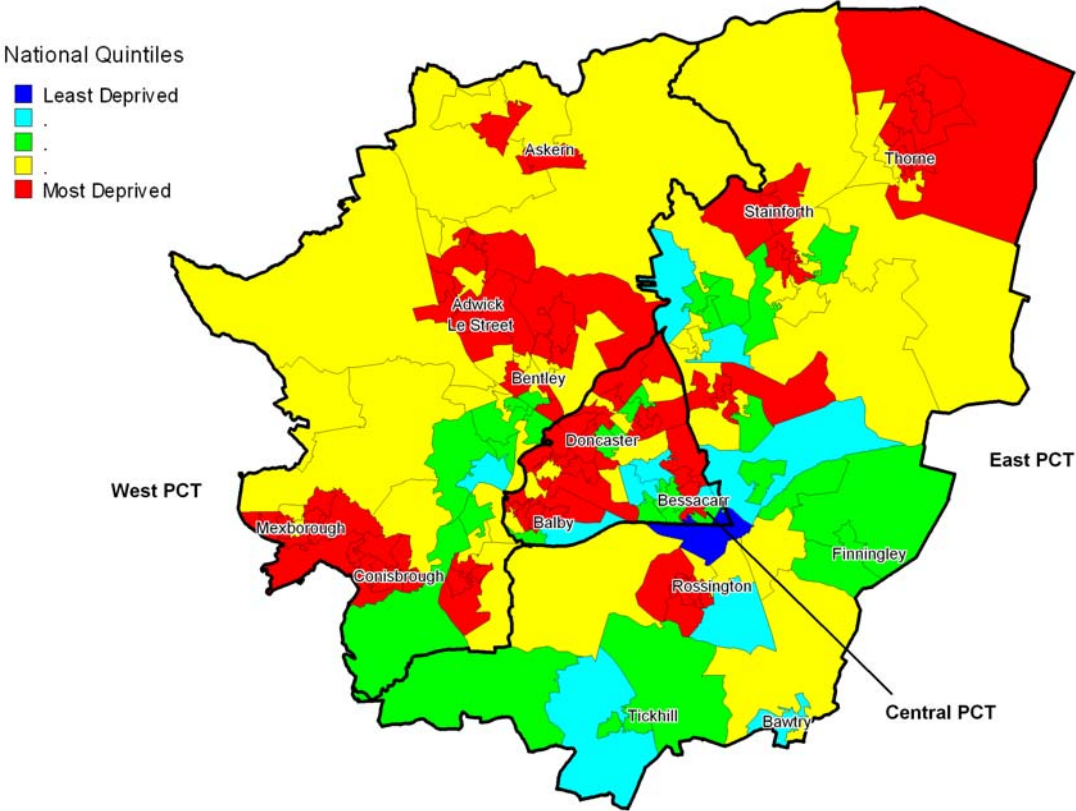
Quintile	Central PCT		East PCT		West PCT		Doncaster	
	No	%	No	%	No	%	No	%
Most deprived	5,400	34.5%	4,000	17.0%	5,620	25.0%	15,020	24.4%
2	4,410	28.2%	5,050	21.5%	8,630	38.4%	18,090	29.3%
3	1,430	9.1%	4,750	20.2%	5,670	25.2%	11,850	19.2%
4	1,940	12.4%	6,350	27.0%	1,510	6.7%	9,800	15.9%
Least deprived	2,460	15.7%	3,350	14.3%	1,070	4.8%	6,880	11.2%
Total	15,640	100.0%	23,500	100.0%	22,500	100.0%	61,640	100.0%

PCTs based on the pre-2004 electoral ward boundaries to reflect the current statutory boundaries

Population: People aged 60 years or over

Employment Deprivation

Map 5: Employment Deprivation in Doncaster



The PCT boundaries on this map reflect the 'conventional' boundaries not the electoral ward based statutory boundaries used in the analysis.

The employment deprivation domain measures levels of involuntary exclusion from work. The indicators used to construct the domain are:

- Unemployment claimant count (women aged 18-59 and men aged 18-64 averaged over 4 quarters).
- Incapacity Benefit claimants (women aged 18-59 and men aged 18-64).
- Severe Disablement Allowance claimants (women aged 18-59 and men aged 18-64).
- Participants in New Deal for the 18-24s who are not included in the claimant count.
- Participants in New Deal for 25+ who are not included in the claimant count.
- Participants in New Deal for Lone Parents aged 18 and over.

The employment domain together with the health and education domains have the highest proportions of the Doncaster population in the most deprived quintile. Over 48% of the working age population is resident in the most deprived employment quintile.

Table 9: Employment Deprivation by PCT and Deprivation Quintile

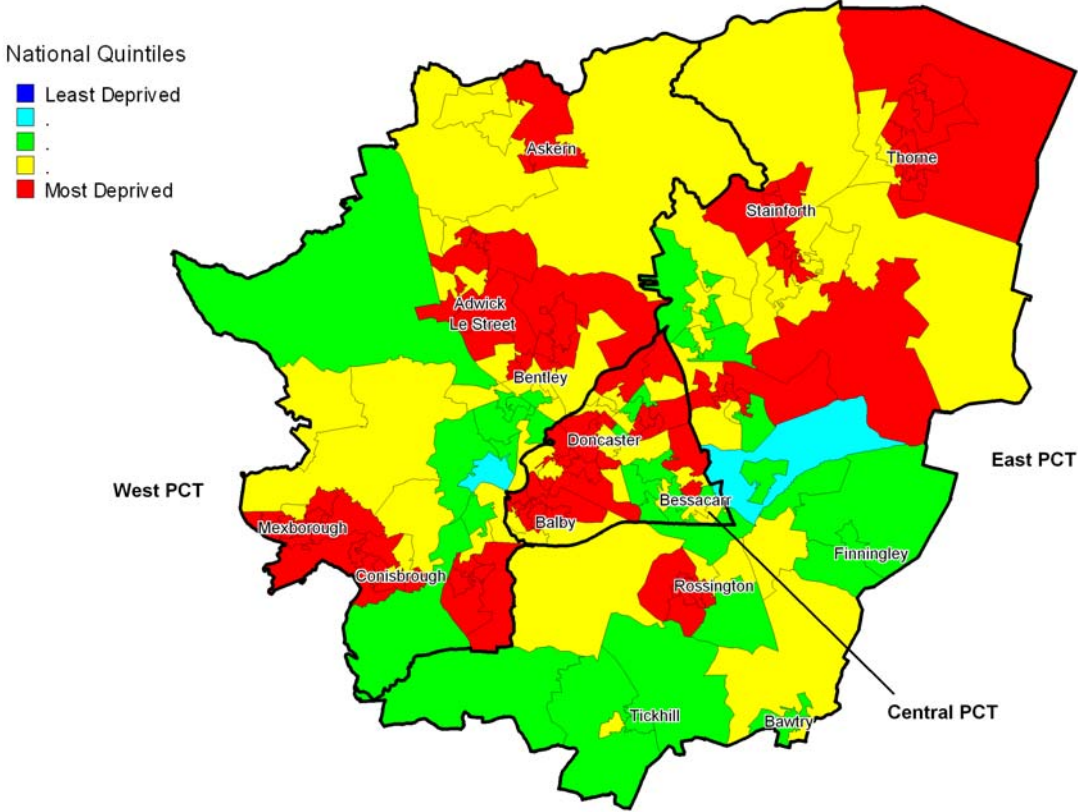
Quintile	Central PCT		East PCT		West PCT		Doncaster	
	No	%	No	%	No	%	No	%
Most deprived	22,800	58.6%	21,570	33.4%	35,070	58.7%	79,440	48.7%
2	5,960	15.3%	19,930	30.8%	20,260	33.9%	46,150	28.3%
3	7,490	19.3%	14,740	22.8%	4,390	7.4%	26,620	16.3%
4	2,640	6.8%	7,560	11.7%	0	0.0%	10,200	6.2%
Least deprived	0	0.0%	840	1.3%	0	0.0%	840	0.5%
Total	38,890	100.0%	64,640	100.0%	59,720	100.0%	163,250	100.0%

PCTs based on the pre-2004 electoral ward boundaries to reflect the current statutory boundaries

Population: People of working age (Males: 18-64; Females: 18-59)

Health Deprivation and Disability

Map 6: Health Deprivation in Doncaster



The PCT boundaries on this map reflect the 'conventional' boundaries not the electoral ward based statutory boundaries used in the analysis.

This domain captures the levels of deprivation related to premature mortality and people whose quality of life is impaired ill health or disability. The following indicators were used to construct this domain:

- Years of Potential Life Lost (YPLL).
- Comparative Illness and Disability Ratio (CIDR).
- Measures of emergency admissions to hospital, derived from Hospital Episode Statistics.
- Measure of adults under 60 suffering from mood or anxiety disorders, based on prescribing, Hospital Episode Statistics, suicides, and health benefits data.

While the proportion of Doncaster residents in the most deprived quintile is slightly lower (48.5%) compared to employment deprivation, there are no SOAs in the least deprived quintile and 80.6% of the district is in the most deprived 2 fifths of the country.

Table 10: Health Deprivation by PCT and Deprivation Quintile

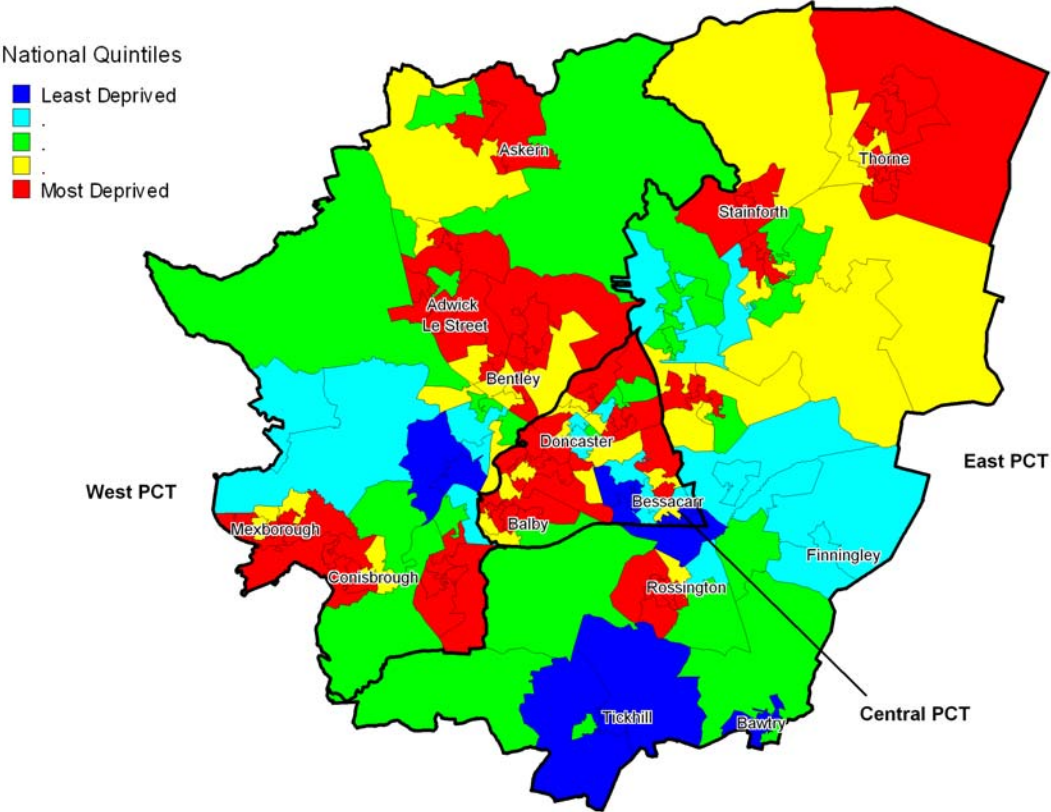
Quintile	Central PCT		East PCT		West PCT		Doncaster	
	No	%	No	%	No	%	No	%
Most deprived	36,620	52.9%	40,520	36.4%	61,220	58.3%	138,360	48.5%
2	20,530	29.7%	37,990	34.1%	33,150	31.6%	91,670	32.1%
3	12,030	17.4%	29,520	26.5%	10,670	10.2%	52,220	18.3%
4	0	0.0%	3,220	2.9%	0	0.0%	3,220	1.1%
Least deprived	0	0.0%	0	0.0%	0	0.0%	0	0.0%
Total	69,180	100.0%	111,250	100.0%	105,040	100.0%	285,470	100.0%

PCTs based on the pre-2004 electoral ward boundaries to reflect the current statutory boundaries

Population: People of all ages

Education, Skills and Training Deprivation

Map 7: Education, Skills and Training Deprivation in Doncaster



The PCT boundaries on this map reflect the 'conventional' boundaries not the electoral ward based statutory boundaries used in the analysis.

Education, skills and training summarises the lack of educational attainment and the low levels of skills related qualifications. The domain reflects two 'sub-domains' young people's deprivation in attaining educational qualifications and the extent of skill-based qualifications in the working age population. The indicators that comprise this domain are as follows:

Children/young people

- Average points score of pupils at Key Stage 2.
- Average points score of pupils at Key Stage 3.
- Average points score of pupils at Key Stage 4.
- Proportion of young people not staying on in school or 'non-advanced' further education above 16.
- Secondary school absence rate.
- Proportion of those aged under 21 not entering Higher Education.

Skills

- Proportions of working age adults (aged 25-54) in the area with no or low qualifications.

With the exceptions of health and employment this domain has the largest proportion of Doncaster residents (47.6%) in the most deprived quintile. This domain, of all the domains of the IMD has the highest proportion of West PCTs population in the most deprived quintile.

Table 11: Education, Skills and Training Deprivation by PCT and Deprivation Quintile

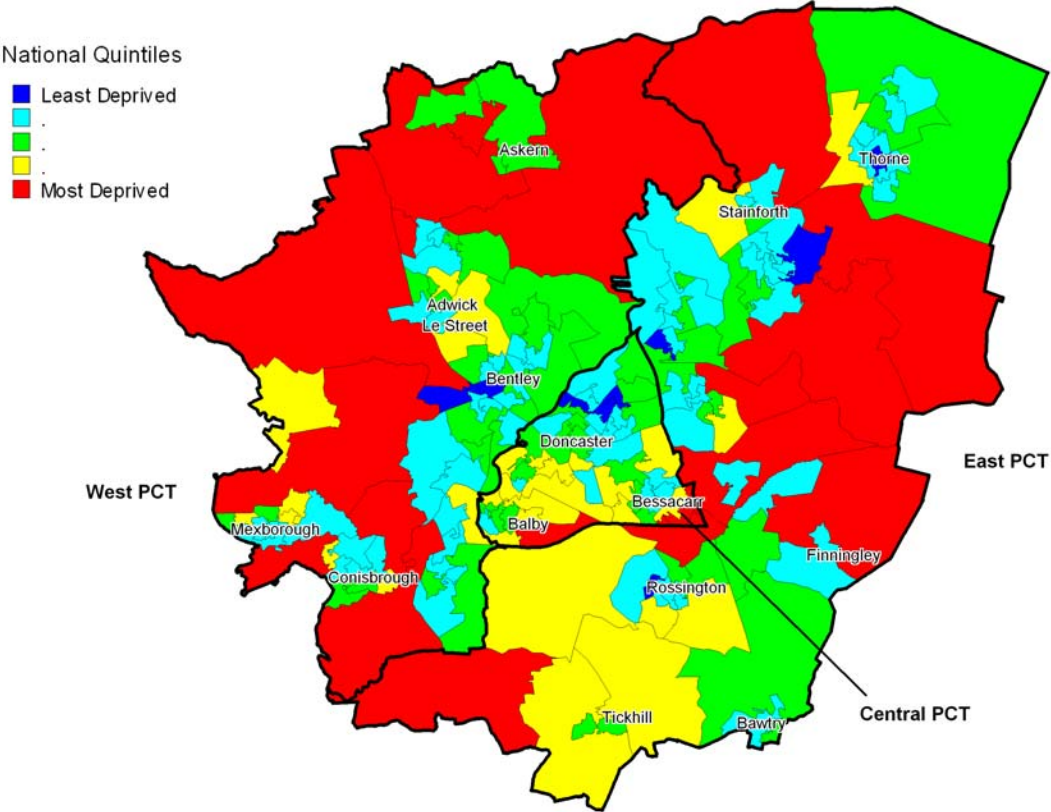
Quintile	Central PCT		East PCT		West PCT		Doncaster	
	No	%	No	%	No	%	No	%
Most deprived	35,360	51.1%	36,490	32.8%	64,170	61.1%	136,020	47.6%
2	14,340	20.7%	19,670	17.7%	20,870	19.9%	54,880	19.2%
3	5,930	8.6%	23,950	21.5%	13,720	13.1%	43,600	15.3%
4	8,950	12.9%	19,080	17.2%	6,280	6.0%	34,310	12.0%
Least deprived	4,600	6.6%	12,060	10.8%	0	0.0%	16,660	5.8%
Total	69,180	100.0%	111,250	100.0%	105,040	100.0%	285,470	100.0%

PCTs based on the pre-2004 electoral ward boundaries to reflect the current statutory boundaries

Population: People of all ages

Barriers to Housing and Services

Map 8: Barriers to Housing and Services in Doncaster



The PCT boundaries on this map reflect the 'conventional' boundaries not the electoral ward based statutory boundaries used in the analysis.

The barriers to housing and services domain include both geographical barriers in access to services and wider barriers such as high house prices. The indicators used in the construction of the domain were:

Wider Barriers

- Household overcrowding.
- LA level percentage of households for whom a decision on their application for assistance under the homeless provisions of housing legislation has been made, assigned to the constituent SOAs.
- Difficulty of Access to owner-occupation.

Sub-Domain: Geographical Barriers

- Road distance to GP premises.
- Road distance to a supermarket or convenience store.
- Road distance to a primary school.
- Road distance to a Post Office.

In this domain only 9.2% of residents are in the most deprived quintile.

Table 12: Barriers to Housing and Services by PCT and Deprivation Quintile

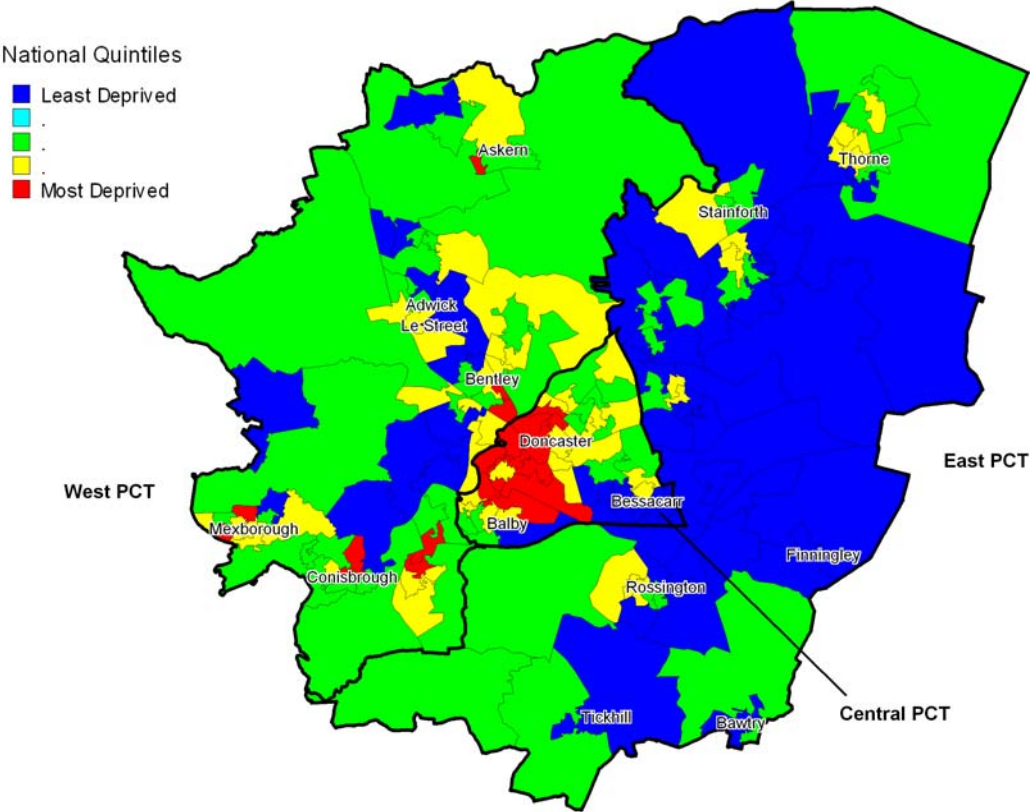
Quintile	Central PCT		East PCT		West PCT		Doncaster	
	No	%	No	%	No	%	No	%
Most deprived	1,270	1.8%	14,390	12.9%	10,490	10.0%	26,150	9.2%
2	18,830	27.2%	14,360	12.9%	14,940	14.2%	48,130	16.9%
3	23,660	34.2%	26,350	23.7%	33,410	31.8%	83,420	29.2%
4	20,890	30.2%	50,200	45.1%	43,120	41.1%	114,210	40.0%
Least deprived	4,530	6.5%	5,950	5.3%	3,080	2.9%	13,560	4.8%
Total	69,180	100.0%	111,250	100.0%	105,040	100.0%	285,470	100.0%

PCTs based on the pre-2004 electoral ward boundaries to reflect the current statutory boundaries

Population: People of all ages

The Living Environment

Map 9: The Quality of the Living Environment in Doncaster



The PCT boundaries on this map reflect the 'conventional' boundaries not the electoral ward based statutory boundaries used in the analysis.

The focus of this domain is the living environment. This domain includes the quality of both the 'indoor' and 'outdoor' environments. This means measuring the quality of housing and the broader environment such as air quality and road traffic accidents. The following are the indicators used in this domain:

The 'indoors' living environment

- Social and private housing in poor condition.
- Houses without central heating.

The 'outdoors' living environment

- Air quality (2001, Source: UK National Air Quality Archive data modelled at SOA level.)
- Road traffic accidents involving injury to pedestrians and cyclists.

This is another domain in which Doncaster does not seem so deprived with only just over 10% of the population in the most deprived SOAs.

Table 13: The Quality of the Living Environment by PCT and Deprivation Quintile

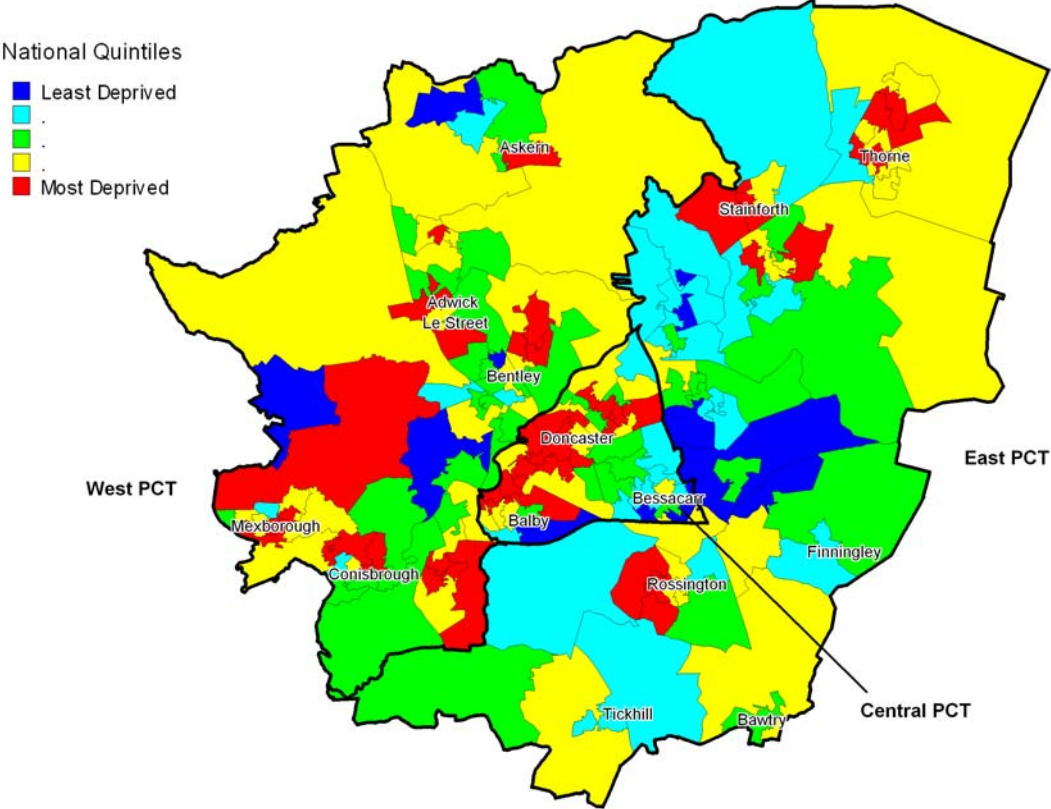
Quintile	Central PCT		East PCT		West PCT		Doncaster	
	No	%	No	%	No	%	No	%
Most deprived	18,850	27.2%	0	0.0%	12,010	11.4%	30,860	10.8%
2	24,790	35.8%	18,810	16.9%	34,120	32.5%	77,720	27.2%
3	16,700	24.1%	28,280	25.4%	44,110	42.0%	89,090	31.2%
4	6,060	8.8%	34,700	31.2%	10,110	9.6%	50,870	17.8%
Least deprived	2,780	4.0%	29,460	26.5%	4,690	4.5%	36,930	12.9%
Total	69,180	100.0%	111,250	100.0%	105,040	100.0%	285,470	100.0%

PCTs based on the pre-2004 electoral ward boundaries to reflect the current statutory boundaries

Population: People of all ages

Crime Deprivation

Map 10: Crime Deprivation in Doncaster



The PCT boundaries on this map reflect the 'conventional' boundaries not the electoral ward based statutory boundaries used in the analysis.

This domain measures the levels of recorded crime in four categories chosen to represent personal and material victimisation. The indicators are as follows:

- Burglary,
- Theft,
- Criminal damage,
- Violence.

Nearly 40% of the residents in Central PCT are in the most deprived quintile.

Table 14: Crime Deprivation by PCT and Deprivation Quintile

Quintile	Central PCT		East PCT		West PCT		Doncaster	
	No	%	No	%	No	%	No	%
Most deprived	27,620	39.9%	19,060	17.1%	29,680	28.3%	76,360	26.7%
2	18,150	26.2%	28,160	25.3%	30,820	29.3%	77,130	27.0%
3	10,340	14.9%	23,480	21.1%	32,300	30.8%	66,120	23.2%
4	10,300	14.9%	28,510	25.6%	7,690	7.3%	46,500	16.3%
Least deprived	2,770	4.0%	12,040	10.8%	4,550	4.3%	19,360	6.8%
Total	69,180	100.0%	111,250	100.0%	105,040	100.0%	285,470	100.0%

PCTs based on the pre-2004 electoral ward boundaries to reflect the current statutory boundaries

Population: People of all ages

The Doncaster Communities and the IMD 2004

As part of the 2004 Directors of Public Health Annual report the new IMD scores were calculated for the 88 Doncaster communities². The tables below compare the IMD with the census deprivation variable (UV67). The UV67 is based on households and has four domains.

- Employment: Any member of the household aged 16-74 who is not a full-time student is either unemployed or permanently sick;
- Education: No member of the household aged 16 to pensionable age has at least 5 GCSEs (grade A-C) or equivalent and no member of the household aged 16-18 is in full-time education;
- Health and Disability: Any member of the household has general health 'not good' in the year before Census or has a limiting long-term illness;
- Housing: The household's accommodation is overcrowded (fewer rooms than required, according to the Census definition) or is in a shared dwelling or does not have sole use of bath/shower and toilet or has no central heating.

There is some agreement between the two measures. However many of the Doncaster's small communities are smaller than SOAs. Therefore a community's score is governed by the SOA they are in. Hence Old Denaby, a community ranked 36 and in the second most affluent quintile in Doncaster according to the UV67, is the second most deprived community in Doncaster according to the IMD. This is because it is in the same SOA as Denaby Main.

² <http://www.doncasterhealth.co.uk/phiu/communities/intro.asp> (accessed 12 April 2005)

Table 15: IMD and UV67 by Community (1)

Community	Population	IMD (score)	IMD Rank	IMD Quintile	UV67	UV67 Rank	UV67 Quintile	Community	Population	IMD (score)	IMD Rank	IMD Quintile	UV67	UV67 Rank	UV67 Quintile
Denaby Main	3,944	66.18	1	1	43.8%	1	1	Clay Lane	898	37.15	23	3	42.6%	2	1
Old Denaby	330	62.99	2	1	30.1%	36	4	Conisbrough	11,422	36.09	24	3	34.8%	24	3
Highfields	1,113	62.59	3	1	42.2%	3	1	Thorne	11,338	35.28	25	3	36.9%	13	2
Hyde Park	3,356	61.13	4	1	39.4%	7	1	Campsall	1,747	31.92	26	3	34.6%	25	3
Town Centre	978	57.09	5	1	35.1%	23	3	Sutton	282	29.35	28	3	25.9%	62	5
Stainforth	6,365	55.30	6	1	41.4%	4	1	Burghwallis	280	29.35	27	3	25.2%	73	5
Toll Bar & Almholme	984	53.35	7	1	38.4%	9	1	Skellow	4,103	28.98	29	3	31.6%	34	4
Lower Wheatley	4,535	51.72	8	1	36.6%	17	2	Hatfield Prison	1,491	28.00	30	3	29.1%	43	4
Carcroft	4,312	45.39	9	1	40.6%	5	1	York Road	782	27.84	31	3	31.9%	31	4
New Rossington	9,089	43.50	10	1	38.5%	8	1	Adwick le Street	2,950	27.58	32	3	29.3%	41	4
Hexthorpe	3,310	43.28	11	1	36.9%	12	2	Braithwaite & Kirk Bramwith	209	27.45	33	3	25.6%	63	5
Edlington	7,981	43.03	12	1	36.7%	16	2	Fenwick	105	27.45	34	3	24.5%	76	5
Balby	19,015	42.71	13	1	35.3%	22	3	Thorpe in Balne	169	27.45	37	3	24.3%	77	5
Woodlands	6,139	41.49	14	2	37.9%	10	1	Owston	177	27.45	36	3	22.5%	84	5
Moorends	5,257	40.51	15	2	36.9%	14	2	Moss	271	27.45	35	3	21.6%	85	5
Mexborough	14,745	40.38	16	2	37.1%	11	1	Armthorpe	12,638	27.32	38	3	32.9%	28	3
Askern	5,416	39.45	17	2	40.1%	6	1	Clayton	210	26.44	40	3	27.7%	52	4
Intake	8,600	38.85	18	2	36.2%	20	2	Hampole & Skelbrooke	195	26.44	41	3	26.9%	54	4
Old Edlington	335	38.44	19	2	35.7%	21	3	Brodsworth & Pickburn	207	26.44	39	3	25.3%	68	5
Bentley	10,559	37.92	20	2	36.2%	19	2	Hooton Pagnell	211	26.44	42	3	22.6%	82	5
Dunscroft	6,555	37.83	21	2	36.2%	18	2	Cantley	5,424	26.09	43	4	34.2%	26	3
Wheatley Park	5,683	37.16	22	3	33.9%	27	3	Scawthorpe	6,922	25.39	44	4	32.9%	29	4

Rank: 1 = most deprived
 Quintile: 1 = most deprived

Table 15: IMD and UV67 by Community (2)

Community	Population	IMD (score)	IMD Rank	IMD Quintile	UV67	UV67 Rank	UV67 Quintile	Community	Population	IMD (score)	IMD Rank	IMD Quintile	UV67	UV67 Rank	UV67 Quintile
Sykehouse	441	23.42	46	4	29.1%	42	4	Cadeby	202	18.41	67	4	25.9%	61	5
Fishlake & Fosterhouses	634	23.42	45	4	28.3%	47	4	Hatfield	3,861	17.62	68	4	26.7%	55	4
Hayfield Green	1,414	23.12	47	4	20.4%	86	5	Barnburgh	983	17.57	69	4	29.9%	38	4
Hatfield Woodhouse	1,849	23.02	48	4	29.9%	37	4	Harlington	1,017	17.38	70	4	24.7%	75	5
Austerfield	544	23.02	49	4	27.4%	53	4	Old Rossington	4,159	15.82	71	4	23.6%	78	5
Town Moor	2,301	22.83	50	4	25.4%	66	5	Edenthorpe	4,748	15.81	72	4	28.3%	48	4
High Melton	350	21.99	52	4	31.9%	30	4	Dunsville	2,425	15.59	73	5	27.8%	51	4
Adwick upon Dearne	233	21.99	51	4	29.7%	39	4	Bawtry	3,184	15.34	74	5	28.3%	46	4
Marr	133	21.99	53	4	22.8%	81	5	Hickleton	295	15.27	75	5	22.5%	83	5
Arksey	1,280	21.85	54	4	31.5%	35	4	Woodfield Plantation	902	14.26	76	5	11.8%	88	5
Belle Vue	1,062	21.75	55	4	29.5%	40	4	Bessacarr	14,163	13.87	77	5	25.3%	69	5
Norton	2,390	21.22	56	4	31.6%	32	4	Cusworth	3,149	13.68	78	5	26.1%	59	5
Loversall	118	20.34	57	4	36.8%	15	2	Kirk Sandall	4,954	13.67	79	5	25.2%	74	5
Wadworth	1,195	20.34	58	4	29.1%	44	4	Blaxton	1,188	12.56	80	5	25.4%	67	5
Scawsby	4,152	19.78	59	4	31.6%	33	4	Tickhill	5,264	12.38	81	5	25.2%	71	5
Bennetthorpe	1,520	19.73	60	4	25.9%	60	5	Sprotbrough	7,608	12.29	82	5	25.3%	70	5
Stainton	262	19.33	64	4	26.6%	56	5	Branton	2,090	11.22	83	5	26.4%	58	5
Clifton	236	19.33	62	4	25.5%	64	5	Barnby Dun	3,539	10.97	84	5	27.9%	50	4
Micklebring	252	19.33	63	4	25.5%	65	5	Old Cantley	272	10.60	85	5	26.5%	57	5
Braithwell	837	19.33	61	4	25.2%	72	5	Finningley	1,472	10.56	86	5	23.5%	79	5
Wheatley Hills	3,778	18.81	65	4	28.1%	49	4	Lakeside	203	8.30	87	5	16.2%	87	5
Warmsworth	3,715	18.77	66	4	28.9%	45	4	Auckley	1,859	8.10	88	5	22.9%	80	5

Rank: 1 = most deprived
 Quintile: 1 = most deprived